

ABflo® 647 Rabbit anti-Human CLEC12A/CD371 mAb

Catalog No.: A23106

Basic Information

Observed MW

Calculated MW

31KDa

Category

Primary antibody

Applications

FC

Cross-Reactivity

Human

CloneNo number

ARC55557-ABf647

Conjugate

ABflo® 647. Ex:648nm. Em:664nm.

Recommended Dilutions

FC 5 µl per 10⁶ cells in
100 µl volume

Background

This gene encodes a member of the C-type lectin/C-type lectin-like domain (CTL/CTLD) superfamily. Members of this family share a common protein fold and have diverse functions, such as cell adhesion, cell-cell signaling, glycoprotein turnover, and roles in inflammation and immune response. The protein encoded by this gene is a negative regulator of granulocyte and monocyte function. Several alternatively spliced transcript variants of this gene have been described, but the full-length nature of some of these variants has not been determined. This gene is closely linked to other CTL/CTLD superfamily members in the natural killer gene complex region on chromosome 12p13.

Immunogen Information

Gene ID

160364

Swiss Prot

Q5QGZ9-2

Immunogen

Recombinant fusion protein containing a sequence corresponding to amino acids 65-265 of human CLEC12A/CD371(NP_612210.4)

Synonyms

CLL1; MICL; CD371; CLL-1; DCAL-2

Contact

☎ | 400-999-6126

✉ | cn.market@abclonal.com.cn

🌐 | www.abclonal.com.cn

Product Information

Source

Rabbit

Isotype

IgG

Purification

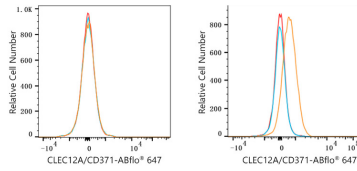
Affinity purification

Storage

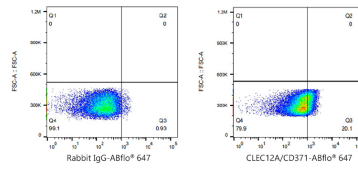
Store at 2-8°C. Avoid freeze.

Buffer: PBS with 0.03% proclin300,0.2% BSA,pH7.3.

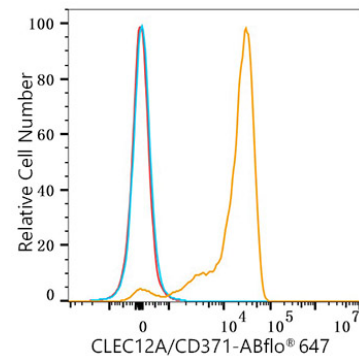
Validation Data



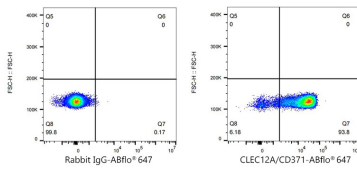
Flow cytometry: 1×10^6 K-562 cells (negative control, Left) and U-937 cells (Right) were surface-stained with ABflo® 647 Rabbit anti-Human CLEC12A/CD371 mAb (A23106, 5 μ l/Test, orange line) or ABflo® 647 Rabbit IgG isotype control (A22070, 5 μ l/Test, blue line). Non-fluorescently stained cells were used as blank control (red line).



Flow cytometry: 1×10^6 U-937 cells were surface-stained with ABflo® 647 Rabbit IgG isotype control (A22070, 5 μ l/Test, left) or ABflo® 647 Rabbit anti-Human CLEC12A/CD371 mAb (A23106, 5 μ l/Test, right).



Flow cytometry: 1×10^6 Human PBMC were surface-stained with ABflo® 647 Rabbit anti-Human CLEC12A/CD371 mAb (A23106, 5 μ l/Test, orange line) or ABflo® 647 Rabbit IgG isotype control (A22070, 5 μ l/Test, blue line). Non-fluorescently stained cells were used as blank control (red line).



Flow cytometry: 1×10^6 Human PBMC were surface-stained with ABflo® 647 Rabbit IgG isotype control (A22070, 5 μ l/Test, left) or ABflo® 647 Rabbit anti-Human CLEC12A/CD371 mAb (A23106, 5 μ l/Test, right).