

ABflo® 488 Rabbit anti-Human/Monkey IgD mAb

Catalog No.: A23112

Basic Information

Observed MW

Calculated MW

42kDa

Category

Primary antibody

Applications

FC

Cross-Reactivity

Human, Rhesus

CloneNo number

ARC60051

Conjugate

ABflo® 488. Ex:491nm. Em:516nm.

Background

IgD is the major antigen receptor isotype on the surface of most peripheral B-cells, where it is coexpressed with IgM. The membrane-bound IgD (mIgD) induces the phosphorylation of CD79A and CD79B by the Src family of protein tyrosine kinases.

Recommended Dilutions

FC 5 µl per 10⁶ cells in
100 µl volume

Immunogen Information

Gene ID

3495

Swiss Prot

P01880

Immunogen

Recombinant protein (or fragment). This information is considered to be commercially sensitive.

Synonyms

Contact

☎ | 400-999-6126

✉ | cn.market@abclonal.com.cn

🌐 | www.abclonal.com.cn

Product Information

Source

Rabbit

Isotype

IgG

Purification

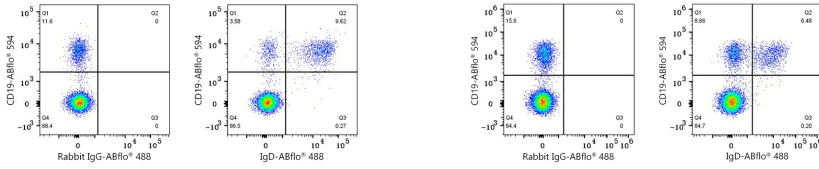
Affinity purification

Storage

Store at 2-8°C. Avoid freeze.

Buffer: PBS containing 0.2% BSA, preserved with proclin300 or sodium azide (as specified on the Certificate of Analysis), pH 7.3.

Validation Data



Flow cytometry: 1×10^6 Human PBMC were surface-stained with ABflo® 450 Mouse anti-Human CD11b mAb (A27475,5 $\mu\text{l}/\text{Test}$), ABflo® 594 Rabbit anti-Human/Monkey CD19 mAb (A24191,5 $\mu\text{l}/\text{Test}$) and ABflo® 488 Rabbit IgG isotype control (A22069,5 $\mu\text{l}/\text{Test}$,left) or ABflo® 488 Rabbit anti-Human/Monkey IgD mAb (A23112,5 $\mu\text{l}/\text{Test}$,right). Cells in the CD11b⁻ gate were used for analysis.

Flow cytometry: 1×10^6 Rhesus PBMC were surface-stained with ABflo® 450 Mouse anti-Human CD11b mAb (A27475,5 $\mu\text{l}/\text{Test}$), ABflo® 594 Rabbit anti-Human/Monkey CD19 mAb (A24191,5 $\mu\text{l}/\text{Test}$) and ABflo® 488 Rabbit IgG isotype control (A22069,5 $\mu\text{l}/\text{Test}$,left) or ABflo® 488 Rabbit anti-Human/Monkey IgD mAb (A23112,5 $\mu\text{l}/\text{Test}$,right). Cells in the CD11b⁻ gate were used for analysis.