

ABflo® 647 Rabbit anti-Mouse IgM mAb

Catalog No.: A23115

Basic Information

Observed MW

Refer to figures

Calculated MW

50kDa

Category

Primary antibody

Applications

FC

Cross-Reactivity

Mouse

CloneNo number

ARC58894-ABf647

Conjugate

ABflo® 647. Ex:648nm. Em:664nm.

Recommended Dilutions

FC 5 µl per 10⁶ cells in
100 µl volume

Background

Enables several functions, including antigen binding activity; identical protein binding activity; and immunoglobulin receptor binding activity. Acts upstream of or within several processes, including early endosome to late endosome transport; immunoglobulin mediated immune response; and positive regulation of B cell proliferation. Located in external side of plasma membrane; extracellular space; and perinuclear region of cytoplasm. Part of B cell receptor complex and immunoglobulin complex, circulating. Is expressed in several structures, including brain; hemolymphoid system; and liver. Used to study non-Hodgkin lymphoma and type 1 diabetes mellitus. Human ortholog(s) of this gene implicated in agammaglobulinemia. Orthologous to human IGHM (immunoglobulin heavy constant mu).

Immunogen Information

Gene ID

Swiss Prot

P01872

Immunogen

Recombinant fusion protein containing a sequence corresponding to amino acids 105-454 of mouse IgM (P01872).

Synonyms

Igm; muH; Igh6; Igh-6; Igh-M

Contact

☎ | 400-999-6126

✉ | cn.market@abclonal.com.cn

🌐 | www.abclonal.com.cn

Product Information

Source

Rabbit

Isotype

IgG

Purification

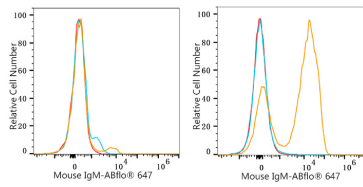
Affinity purification

Storage

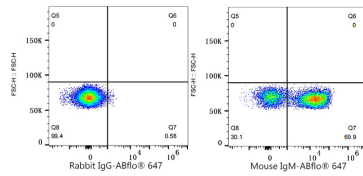
Store at 2-8°C. Avoid freeze.

Buffer: PBS with 0.03% proclin300,0.2% BSA,pH7.3.

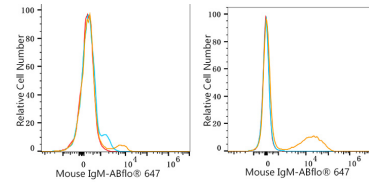
Validation Data



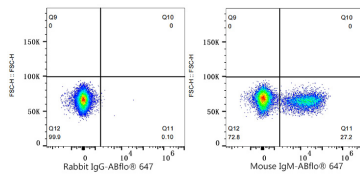
Flow cytometry: 1×10^6 NIH/3T3 cells (negative control, left) and C57BL/6 splenocytes (right) were surface-stained with ABflo® 647 Rabbit anti-Mouse IgM mAb (A23115, 5 μ l/Test, orange line) or ABflo® 647 Rabbit IgG isotype control (A22070, 5 μ l/Test, blue line). Non-fluorescently stained cells were used as blank control (red line).



Flow cytometry: 1×10^6 C57BL/6 splenocytes were surface-stained with ABflo® 647 Rabbit IgG isotype control (A22070, 5 μ l/Test, left) or ABflo® 647 Rabbit anti-Mouse IgM mAb (A23115, 5 μ l/Test, right).



Flow cytometry: 1×10^6 NIH/3T3 cells (negative control, left) and Mouse PBMC (right) were surface-stained with ABflo® 647 Rabbit anti-Mouse IgM mAb (A23115, 5 μ l/Test, orange line) or ABflo® 647 Rabbit IgG isotype control (A22070, 5 μ l/Test, blue line). Non-fluorescently stained cells were used as blank control (red line).



Flow cytometry: 1×10^6 Mouse PBMC were surface-stained with ABflo® 647 Rabbit IgG isotype control (A22070, 5 μ l/Test, left) or ABflo® 647 Rabbit anti-Mouse IgM mAb (A23115, 5 μ l/Test, right).