

ABflo® 647 Rabbit anti-Human CD2 mAb

Catalog No.: A23117

Basic Information

Observed MW

Calculated MW
39kDa

Category
Primary antibody

Applications
FC

Cross-Reactivity
Human

CloneNo number
ARC59333-ABf647

Conjugate
ABflo® 647. Ex:648nm. Em:664nm.

Recommended Dilutions

FC 5 µl per 10⁶ cells in
100 µl volume

Background

The protein encoded by this gene is a surface antigen found on all peripheral blood T-cells. The encoded protein interacts with LFA3 (CD58) on antigen presenting cells to optimize immune recognition. A locus control region (LCR) has been found in the 3' flanking sequence of this gene.

Immunogen Information

Gene ID	Swiss Prot
914	P06729

Immunogen
Recombinant fusion protein containing a sequence corresponding to amino acids 25-209 of human CD2 (NP_001758.2).

Synonyms
T11; SRBC; LFA-2

Contact

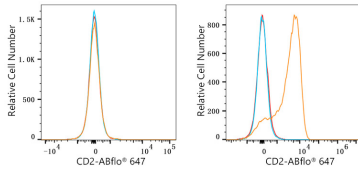
☎ | 400-999-6126
✉ | cn.market@abclonal.com.cn
🌐 | www.abclonal.com.cn

Product Information

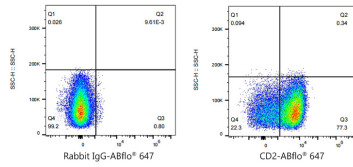
Source	Isotype	Purification
Rabbit	IgG	Affinity purification

Storage
Store at 2-8°C. Avoid freeze.
Buffer: PBS with 0.03% proclin300,0.2% BSA,pH7.3.

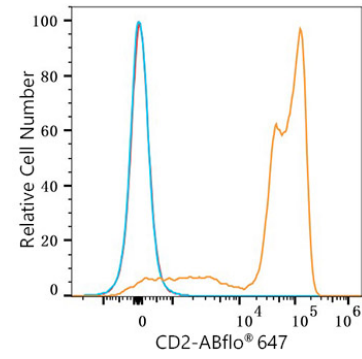
Validation Data



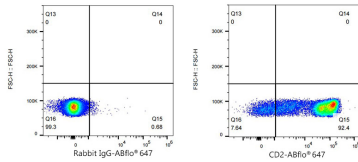
Flow cytometry: 1×10^6 K-562 cells (negative control, Left) and Jurkat cells (Right) were surface-stained with ABflo® 647 Rabbit anti-Human CD2 mAb (A23117, 5 μ l/Test, orange line) or ABflo® 647 Rabbit IgG isotype control (A22070, 5 μ l/Test, blue line). Non-fluorescently stained cells were used as blank control (red line).



Flow cytometry: 1×10^6 Jurkat cells were surface-stained with ABflo® 647 Rabbit IgG isotype control (A22070, 5 μ l/Test, left) or ABflo® 647 Rabbit anti-Human CD2 mAb (A23117, 5 μ l/Test, right).



Flow cytometry: 1×10^6 Human PBMC were surface-stained with ABflo® 647 Rabbit anti-Human CD2 mAb (A23117, 5 μ l/Test, orange line) or ABflo® 647 Rabbit IgG isotype control (A22070, 5 μ l/Test, blue line). Non-fluorescently stained cells were used as blank control (red line).



Flow cytometry: 1×10^6 Human PBMC were surface-stained with ABflo® 647 Rabbit IgG isotype control (A22070, 5 μ l/Test, left) or ABflo® 647 Rabbit anti-Human CD2 mAb (A23117, 5 μ l/Test, right).