

KDM3B Rabbit pAb

Catalog No.: A2312 **1 Publications**

Basic Information

Observed MW

225kDa

Calculated MW

192kDa

Category

Primary antibody

Applications

WB,IHC-P,ELISA

Cross-Reactivity

Human

Background

Predicted to enable chromatin DNA binding activity; histone H3-methyl-lysine-9 demethylase activity; and transcription coregulator activity. Predicted to be involved in histone H3-K9 demethylation and regulation of transcription by RNA polymerase II. Located in nucleoplasm. Biomarker of acute lymphoblastic leukemia; breast cancer; colorectal cancer; and lung non-small cell carcinoma.

Recommended Dilutions

WB 1:500 - 1:2000

IHC-P 1:50 - 1:200

ELISA Recommended starting concentration is 1 µg/mL. Please optimize the concentration based on your specific assay requirements.

Immunogen Information

Gene ID

51780

Swiss Prot

Q7LBC6

Immunogen

Recombinant fusion protein containing a sequence corresponding to amino acids 400-600 of human KDM3B (NP_057688.2).

Synonyms

5qNCA; DIJOS; NET22; C5orf7; JMJD1B; KDM3B

Contact

 | 400-999-6126

 | cn.market@abclonal.com.cn

 | www.abclonal.com.cn

Product Information

Source

Rabbit

Isotype

IgG

Purification

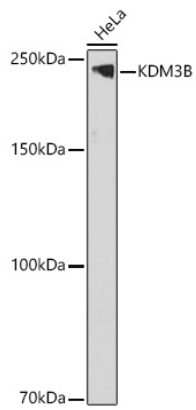
Affinity purification

Storage

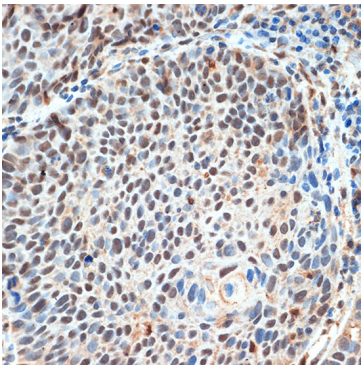
Store at -20°C. Avoid freeze / thaw cycles.

Buffer: PBS with 0.09% Sodium azide,50% glycerol,pH7.3.

Validation Data



Western blot analysis of lysates from HeLa cells, using KDM3B Rabbit pAb (A2312) at 1:1000 dilution.
Secondary antibody: HRP-conjugated Goat anti-Rabbit IgG (H+L) (AS014) at 1:10000 dilution.
Lysates/proteins: 25µg per lane.
Blocking buffer: 3% nonfat dry milk in TBST.
Detection: ECL Basic Kit (RM00020).
Exposure time: 90s.



Immunohistochemistry analysis of paraffin-embedded Human esophageal cancer using KDM3B Rabbit pAb (A2312) at dilution of 1:100 (40x lens). Microwave antigen retrieval performed with 0.01M Tris/EDTA Buffer (pH 9.0) prior to IHC staining.