

# MFSD2A/NLS1 Rabbit mAb

Catalog No.: A23149 **Recombinant**

## Basic Information

### Observed MW

70kDa

### Calculated MW

60kDa

### Category

Primary antibody

### Applications

ELISA, WB

### Cross-Reactivity

Human, Mouse, Rat

### CloneNo number

ARC59864

## Background

The protein encoded by this gene is a transmembrane protein and sodium-dependent lysophosphatidylcholine transporter. The encoded protein is involved in the establishment of the blood-brain barrier and is required for brain growth and function. Defects in this gene are a cause of a progressive microcephaly syndrome.

## Recommended Dilutions

WB 1:1000 - 1:5000

## Immunogen Information

### Gene ID

84879

### Swiss Prot

Q8NA29

### Immunogen

Recombinant protein of human MFSD2A/NLS1.

### Synonyms

NLS1; MFSD2; MCPH15; SLC59A1; HsMFSD2A; NEDMISBA; MFSD2A/NLS1

## Contact

☎ | 400-999-6126

✉ | [cn.market@abclonal.com.cn](mailto:cn.market@abclonal.com.cn)

🌐 | [www.abclonal.com.cn](http://www.abclonal.com.cn)

## Product Information

### Source

Rabbit

### Isotype

IgG

### Purification

Affinity purification

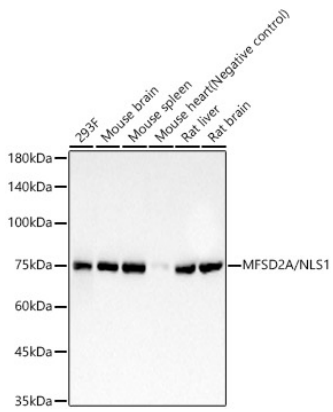
### Storage

Store at -20°C. Avoid freeze / thaw cycles.

Buffer: PBS with 0.05% proclin300, 0.05% BSA, 50% glycerol, pH7.3.

## Validation Data

---



Western blot analysis of various lysates, using MFSD2A/NLS1 antibody (A23149) at 1:2000 dilution.  
Secondary antibody: HRP Goat Anti-Rabbit IgG (H+L) (AS014) at 1:10000 dilution.  
Lysates/proteins: 25µg per lane.  
Blocking buffer: 3% nonfat dry milk in TBST.  
Detection: ECL Basic Kit (RM00020).  
Exposure time: 60s.