

ATP6 Rabbit mAb

Catalog No.: A23150 **Recombinant**

Basic Information

Observed MW

20kDa

Calculated MW

25kDa

Category

Primary antibody

Applications

ELISA, WB

Cross-Reactivity

Human

CloneNo number

ARC59849

Background

Predicted to contribute to proton-transporting ATP synthase activity, rotational mechanism. Predicted to be involved in mitochondrial ATP synthesis coupled proton transport. Located in mitochondrion. Is expressed in several structures, including alimentary system; brain; heart; integumental system; and sensory organ. Human ortholog(s) of this gene implicated in Leber hereditary optic neuropathy; NARP syndrome; Parkinson's disease; multiple sclerosis; and systemic lupus erythematosus. Orthologous to human MT-ATP6 (mitochondrially encoded ATP synthase membrane subunit 6).

Recommended Dilutions

WB 1:1000 - 1:5000

Immunogen Information

Gene ID

17705

Swiss Prot

P00848

Immunogen

A synthetic peptide corresponding to a sequence within amino acids 126-226 of human ATP6. (NP_904333.1).

Synonyms

ATP6

Contact

 | 400-999-6126

 | cn.market@abclonal.com.cn

 | www.abclonal.com.cn

Product Information

Source

Rabbit

Isotype

IgG

Purification

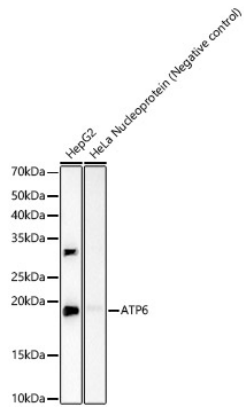
Affinity purification

Storage

Store at -20°C. Avoid freeze / thaw cycles.

Buffer: PBS with 0.05% proclin300, 0.05% BSA, 50% glycerol, pH7.3.

Validation Data



Western blot analysis of various lysates, using ATP6 Rabbit mAb (A23150) at 1:2000 dilution.
Secondary antibody: HRP Goat Anti-Rabbit IgG (H+L) (AS014) at 1:10000 dilution.
Lysates/proteins: 25 μ g per lane.
Blocking buffer: 3% nonfat dry milk in TBST.
Detection: ECL Basic Kit (RM00020).
Exposure time: 90s.