

CD25 Rabbit mAb

Catalog No.: A23153 **Recombinant** **1 Publications**

Basic Information

Observed MW

45-75kDa

Calculated MW

31kDa

Category

Primary antibody

Applications

ELISA,WB,IF/ICC

Cross-Reactivity

Human

CloneNo number

ARC58173

Background

The interleukin 2 (IL2) receptor alpha (IL2RA) and beta (IL2RB) chains, together with the common gamma chain (IL2RG), constitute the high-affinity IL2 receptor. Homodimeric alpha chains (IL2RA) result in low-affinity receptor, while homodimeric beta (IL2RB) chains produce a medium-affinity receptor. Normally an integral-membrane protein, soluble IL2RA has been isolated and determined to result from extracellular proteolysis. Alternately-spliced IL2RA mRNAs have been isolated, but the significance of each is presently unknown. Mutations in this gene are associated with interleukin 2 receptor alpha deficiency. Patients with severe Coronavirus Disease 2019 (COVID-19), the disease caused by the novel severe acute respiratory syndrome coronavirus 2 (SARS-CoV-2), have significantly elevated levels of IL2R in their plasma. Similarly, serum IL-2R levels are found to be elevated in patients with different types of carcinomas. Certain IL2RA and IL2RB gene polymorphisms have been associated with lung cancer risk.

Recommended Dilutions

WB	1:2000 - 1:20000
IF/ICC	1:100 - 1:500

Immunogen Information

Gene ID

3559

Swiss Prot

P01589

Immunogen

Recombinant fusion protein containing a sequence corresponding to amino acids 22-213 of human CD25 (NP_000408.1).

Synonyms

p55; CD25; IL2R; IMD41; TCGFR; IDDM10

Contact

☎ | 400-999-6126

✉ | cn.market@abclonal.com.cn

🌐 | www.abclonal.com.cn

Product Information

Source

Rabbit

Isotype

IgG

Purification

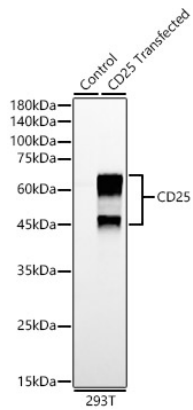
Affinity purification

Storage

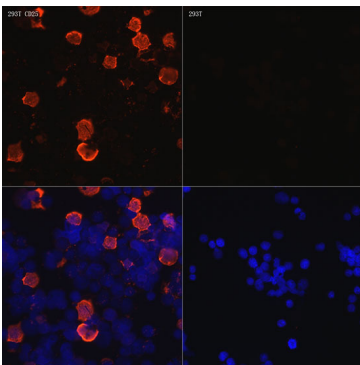
Store at -20°C. Avoid freeze / thaw cycles.

Buffer: PBS with 0.05% proclin300,0.05% BSA,50% glycerol,pH7.3.

Validation Data



Western blot analysis of lysates from wild type (WT) and 293T cells transfected with CD25 using CD25 Rabbit mAb (A23153) at 1:20000 dilution.
Secondary antibody: HRP Goat Anti-Rabbit IgG (H+L) (AS014) at 1:10000 dilution.
Lysates/proteins: 25µg per lane.
Blocking buffer: 3% nonfat dry milk in TBST.
Detection: ECL Enhanced Kit (RM00021).
Exposure time: 30s.



Immunofluorescence analysis of 293T cells transfected with CD25 using CD25 Rabbit mAb (A23153) at dilution of 1:500 (40x lens).
Secondary antibody: Cy3 Goat Anti-Rabbit IgG (H+L) (AS007) at 1:500 dilution. Blue: DAPI for nuclear staining.