

Pepsinogen I (PG I) Rabbit mAb

Catalog No.: A23155 **Recombinant**

Basic Information

Observed MW

Refer to figures

Calculated MW

42kDa

Category

Primary antibody

Applications

ELISA, IHC-P, IF/ICC

Cross-Reactivity

Human, Mouse, Rat

CloneNo number

ARC59039

Background

This gene encodes a protein precursor of the digestive enzyme pepsin, a member of the peptidase A1 family of endopeptidases. The encoded precursor is secreted by gastric chief cells and undergoes autocatalytic cleavage in acidic conditions to form the active enzyme, which functions in the digestion of dietary proteins. This gene is found in a cluster of related genes on chromosome 11, each of which encodes one of multiple pepsinogens. Pepsinogen levels in serum may serve as a biomarker for atrophic gastritis and gastric cancer.

Recommended Dilutions

IHC-P	1:50 - 1:200
IF/ICC	1:50 - 1:200

Immunogen Information

Gene ID

643847

Swiss Prot

P0DJD7

Immunogen

Recombinant protein of human Pepsinogen I (PG I).

Synonyms

Pepsinogen-4; Pepsinogen I (PG I)

Contact

☎ | 400-999-6126

✉ | cn.market@abclonal.com.cn

🌐 | www.abclonal.com.cn

Product Information

Source

Rabbit

Isotype

IgG

Purification

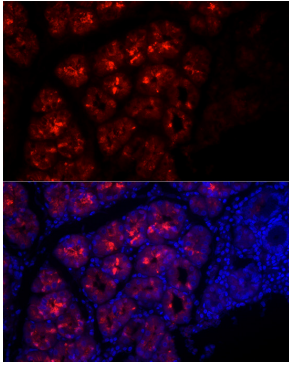
Affinity purification

Storage

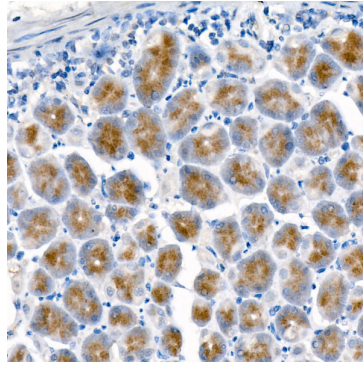
Store at -20°C. Avoid freeze / thaw cycles.

Buffer: PBS with 0.05% proclin300, 0.05% BSA, 50% glycerol, pH7.3.

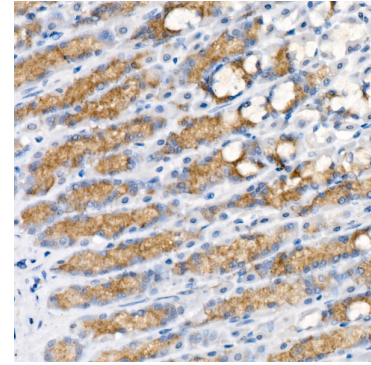
Validation Data



Immunofluorescence analysis of paraffin-embedded human stomach, using Pepsinogen I (PG I) Rabbit mAb (A23155) at dilution of 1:200 (40x lens). Secondary antibody: Cy3 Goat Anti-Rabbit IgG (H+L) (AS007) at 1:500 dilution. Blue: DAPI for nuclear staining. Perform high pressure antigen retrieval with 10 mM citrate buffer pH 6.0 before commencing with IF staining protocol.



Immunohistochemistry analysis of paraffin-embedded mouse stomach using Pepsinogen I (PG I) Rabbit mAb (A23155) at dilution of 1:100 (40x lens). Perform high pressure antigen retrieval with 10 mM citrate buffer pH 6.0 before commencing with IHC staining protocol.



Immunohistochemistry analysis of paraffin-embedded rat stomach using Pepsinogen I (PG I) Rabbit mAb (A23155) at dilution of 1:100 (40x lens). Perform high pressure antigen retrieval with 10 mM citrate buffer pH 6.0 before commencing with IHC staining protocol.