

# ASCT2/SLC1A5 Rabbit mAb

Catalog No.: A23156 **Recombinant**

## Basic Information

### Observed MW

70-80kDa

### Calculated MW

57kDa

### Category

Primary antibody

### Applications

ELISA, WB, IHC-P

### Cross-Reactivity

Human, Mouse

### CloneNo number

ARC59409

## Background

The SLC1A5 gene encodes a sodium-dependent neutral amino acid transporter that can act as a receptor for RD114/type D retrovirus (Larriba et al., 2001 [PubMed 11781704]).

## Recommended Dilutions

**WB** 1:500 - 1:1000

**IHC-P** 1:50 - 1:200

## Immunogen Information

### Gene ID

6510

### Swiss Prot

Q15758

### Immunogen

Recombinant fusion protein containing a sequence corresponding to amino acids 483-541 of human ASCT2/SLC1A5(NP\_005619.1).

### Synonyms

R16; AAAT; ATBO; M7V1; RDRC; ASCT2; M7VS1; ASCT2/SLC1A5

## Contact

☎ | 400-999-6126

✉ | [cn.market@abclonal.com.cn](mailto:cn.market@abclonal.com.cn)

🌐 | [www.abclonal.com.cn](http://www.abclonal.com.cn)

## Product Information

### Source

Rabbit

### Isotype

IgG

### Purification

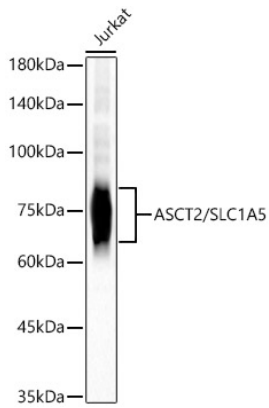
Affinity purification

### Storage

Store at -20°C. Avoid freeze / thaw cycles.

Buffer: PBS with 0.05% proclin300, 0.05% BSA, 50% glycerol, pH7.3.

## Validation Data



Western blot analysis of lysates from Jurkat cells, using ASCT2/SLC1A5 Rabbit mAb (A23156) at 1:1000 dilution.

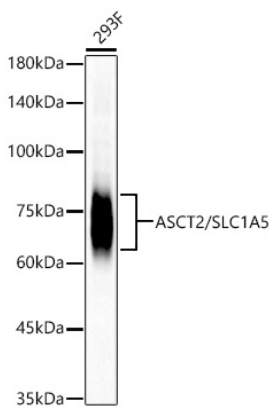
Secondary antibody: HRP Goat Anti-Rabbit IgG (H+L) (AS014) at 1:10000 dilution.

Lysates/proteins: 25µg per lane.

Blocking buffer: 3% nonfat dry milk in TBST.

Detection: ECL Basic Kit (RM00020).

Exposure time: 60s.



Western blot analysis of lysates from 293F cells, using ASCT2/SLC1A5 Rabbit mAb (A23156) at 1:1000 dilution.

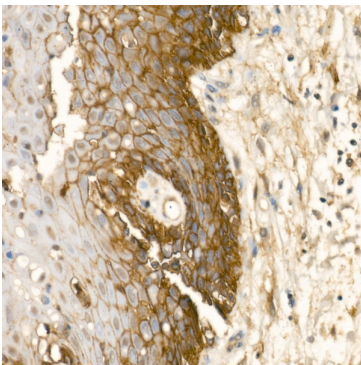
Secondary antibody: HRP Goat Anti-Rabbit IgG (H+L) (AS014) at 1:10000 dilution.

Lysates/proteins: 25µg per lane.

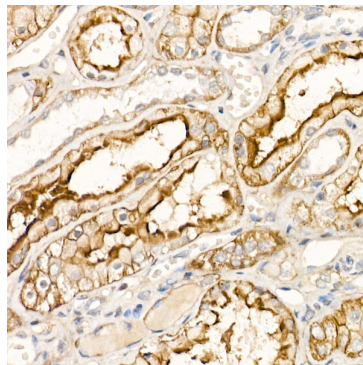
Blocking buffer: 3% nonfat dry milk in TBST.

Detection: ECL Basic Kit (RM00020).

Exposure time: 60s.



Immunohistochemistry analysis of paraffin-embedded human cervix using ASCT2/SLC1A5 Rabbit mAb (A23156) at dilution of 1:100 (40x lens). Perform high pressure antigen retrieval with 10 mM citrate buffer pH 6.0 before commencing with IHC staining protocol.



Immunohistochemistry analysis of paraffin-embedded human kidney using ASCT2/SLC1A5 Rabbit mAb (A23156) at dilution of 1:100 (40x lens). Perform high pressure antigen retrieval with 10 mM citrate buffer pH 6.0 before commencing with IHC staining protocol.