

# CD22 Rabbit mAb

Catalog No.: A23160 **Recombinant**

## Basic Information

### Observed MW

130kDa/140kDa

### Calculated MW

95kDa

### Category

Primary antibody

### Applications

ELISA, WB, IHC-P

### Cross-Reactivity

Human

### CloneNo number

ARC59246

## Background

Predicted to enable CD4 receptor binding activity; protein phosphatase binding activity; and sialic acid binding activity. Involved in B cell activation; negative regulation of B cell receptor signaling pathway; and regulation of endocytosis. Located in early endosome and recycling endosome.

## Recommended Dilutions

WB 1:1000 - 1:5000

IHC-P 1:50 - 1:200

## Immunogen Information

### Gene ID

933

### Swiss Prot

P20273

### Immunogen

Recombinant fusion protein containing a sequence corresponding to amino acids 20-687 of human CD22 (NP\_001762.2).

### Synonyms

SIGLEC2; SIGLEC-2; CD22

## Contact

☎ | 400-999-6126

✉ | [cn.market@abclonal.com.cn](mailto:cn.market@abclonal.com.cn)

🌐 | [www.abclonal.com.cn](http://www.abclonal.com.cn)

## Product Information

### Source

Rabbit

### Isotype

IgG

### Purification

Affinity purification

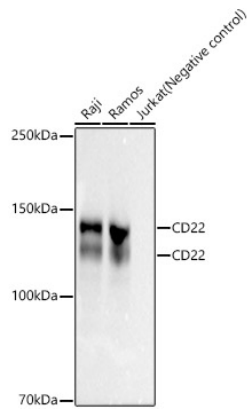
### Storage

Store at -20°C. Avoid freeze / thaw cycles.

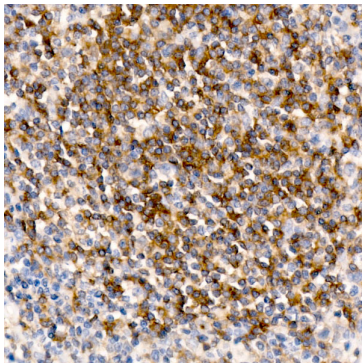
Buffer: PBS with 0.05% proclin300, 0.05% BSA, 50% glycerol, pH7.3.

## Validation Data

---



Western blot analysis of various lysates, using CD22 Rabbit mAb (A23160) at 1:3000 dilution.  
Secondary antibody: HRP Goat Anti-Rabbit IgG (H+L) (AS014) at 1:10000 dilution.  
Lysates/proteins: 25µg per lane.  
Blocking buffer: 3% nonfat dry milk in TBST.  
Detection: ECL Basic Kit (RM00020).  
Exposure time: 30s.



Immunohistochemistry analysis of paraffin-embedded human tonsil using CD22 Rabbit mAb (A23160) at dilution of 1:200 (40x lens). Perform high pressure antigen retrieval with 10 mM Tris/EDTA buffer pH 9.0 before commencing with IHC staining protocol.