

# ABflo® 488 Rabbit anti-Human CD226/DNAM-1 mAb

Catalog No.: A23175

## Basic Information

### Observed MW

### Calculated MW

39kDa

### Category

Primary antibody

### Applications

FC

### Cross-Reactivity

Human

### CloneNo number

ARC60058-ABf488

### Conjugate

ABflo® 488. Ex:491nm. Em:516nm.

## Recommended Dilutions

FC 5 µl per 10<sup>6</sup> cells in  
100 µl volume

## Background

This gene encodes a glycoprotein expressed on the surface of NK cells, platelets, monocytes and a subset of T cells. It is a member of the Ig-superfamily containing 2 Ig-like domains of the V-set. The protein mediates cellular adhesion of platelets and megakaryocytic cells to vascular endothelial cells. The protein also plays a role in megakaryocytic cell maturation. Alternative splicing results in multiple transcript variants.

## Immunogen Information

### Gene ID

10666

### Swiss Prot

Q15762

### Immunogen

Recombinant fusion protein containing a sequence corresponding to amino acids 19-247 of human CD226/DNAM-1 (NP\_006557.2).

### Synonyms

PTA1; DNAM1; DNAM-1; TLISA1

## Contact

 | 400-999-6126

 | [cn.market@abclonal.com.cn](mailto:cn.market@abclonal.com.cn)

 | [www.abclonal.com.cn](http://www.abclonal.com.cn)

## Product Information

### Source

Rabbit

### Isotype

IgG

### Purification

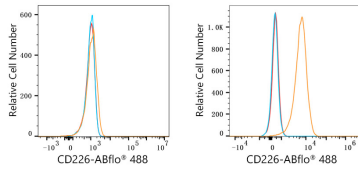
Affinity purification

### Storage

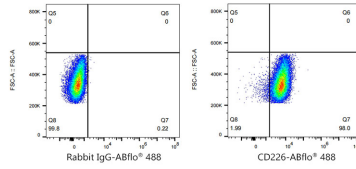
Store at 2-8°C. Avoid freeze.

Buffer: PBS with 0.03% proclin300,0.2% BSA,pH7.3.

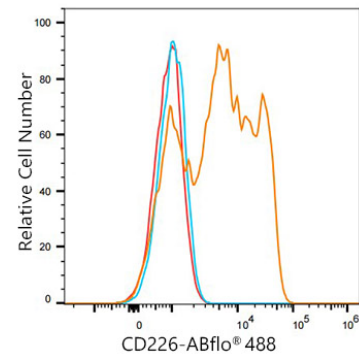
## Validation Data



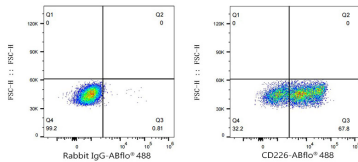
Flow cytometry:  $1 \times 10^6$  293F cells (negative control, left) and HEL cells (right) were surface-stained with ABflo® 488 Rabbit anti-Human CD226/DNAM-1 mAb (A23175, 5  $\mu$ l/Test, orange line) or ABflo® 488 Rabbit IgG isotype control (A22069, 5  $\mu$ l/Test, blue line). Non-fluorescently stained cells were used as blank control (red line).



Flow cytometry:  $1 \times 10^6$  HEL cells were surface-stained with ABflo® 488 Rabbit IgG isotype control (A22069, 5  $\mu$ l/Test, left) or ABflo® 488 Rabbit anti-Human CD226/DNAM-1 mAb (A23175, 5  $\mu$ l/Test, right).



Flow cytometry:  $1 \times 10^6$  Human PBMC were surface-stained with ABflo® 488 Rabbit anti-Human CD226/DNAM-1 mAb (A23175, 5  $\mu$ l/Test, orange line) or ABflo® 488 Rabbit IgG isotype control (A22069, 5  $\mu$ l/Test, blue line). Non-fluorescently stained cells were used as blank control (red line).



Flow cytometry:  $1 \times 10^6$  Human PBMC were surface-stained with ABflo® 488 Rabbit IgG isotype control (A22069, 5  $\mu$ l/Test, left) or ABflo® 488 Rabbit anti-Human CD226/DNAM-1 mAb (A23175, 5  $\mu$ l/Test, right).