

CDCP1 Rabbit mAb

Catalog No.: A23178 **Recombinant**

Basic Information

Observed MW

70/140kDa

Calculated MW

93kDa

Category

Primary antibody

Applications

ELISA, WB

Cross-Reactivity

Human

CloneNo number

ARC55517

Background

This gene encodes a transmembrane protein which contains three extracellular CUB domains and acts as a substrate for Src family kinases. The protein plays a role in the tyrosine phosphorylation-dependent regulation of cellular events that are involved in tumor invasion and metastasis. Alternative splicing results in multiple transcript variants of this gene.

Recommended Dilutions

WB 1:10000 - 1:30000

Immunogen Information

Gene ID

64866

Swiss Prot

Q9H5V8

Immunogen

Recombinant fusion protein containing a sequence corresponding to amino acids 30-666 of human CDCP1 (NP_073753.3).

Synonyms

CD318; TRASK; SIMA135; CDCP1

Contact

 | 400-999-6126

 | cn.market@abclonal.com.cn

 | www.abclonal.com.cn

Product Information

Source

Rabbit

Isotype

IgG

Purification

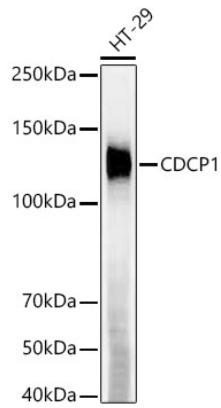
Affinity purification

Storage

Store at -20°C. Avoid freeze / thaw cycles.

Buffer: PBS with 0.05% proclin300, 0.05% BSA, 50% glycerol, pH7.3.

Validation Data



Western blot analysis of lysates from HT-29 cells, using CDCP1 Rabbit mAb (A23178) at 1:30000 dilution.
Secondary antibody: HRP Goat Anti-Rabbit IgG (H+L) (AS014) at 1:10000 dilution.
Lysates/proteins: 25 μ g per lane.
Blocking buffer: 3% nonfat dry milk in TBST.
Detection: ECL Enhanced Kit (RM00021).
Exposure time: 90s.