

# ABflo® 647 Rabbit anti-Human HER2/ErbB2 mAb

**Catalog No.: A23183**

## Basic Information

**Observed MW**

Refer to figures

**Calculated MW**

138kDa

**Category**

Primary antibody

**Applications**

FC

**Cross-Reactivity**

Human

**CloneNo number**

ARC5137-ABf647

**Conjugate**

ABflo® 647. Ex:648nm. Em:664nm.

## Recommended Dilutions

<b>FC</b>	5 µl per 10 <sup>6</sup> cells in 100 µl volume
-----------	--

## Background

This gene encodes a member of the epidermal growth factor (EGF) receptor family of receptor tyrosine kinases. This protein has no ligand binding domain of its own and therefore cannot bind growth factors. However, it does bind tightly to other ligand-bound EGF receptor family members to form a heterodimer, stabilizing ligand binding and enhancing kinase-mediated activation of downstream signalling pathways, such as those involving mitogen-activated protein kinase and phosphatidylinositol-3 kinase. Allelic variations at amino acid positions 654 and 655 of isoform a (positions 624 and 625 of isoform b) have been reported, with the most common allele, Ile654/Ile655, shown here. Amplification and/or overexpression of this gene has been reported in numerous cancers, including breast and ovarian tumors. Alternative splicing results in several additional transcript variants, some encoding different isoforms and others that have not been fully characterized.

## Immunogen Information

**Gene ID**

2064

**Swiss Prot**

P04626

**Immunogen**

Recombinant fusion protein containing a sequence corresponding to amino acids 23-652 of human HER2/ErbB2 (NP\_004439.2).


**Synonyms**

NEU; NGL; HER2; TKR1; CD340; HER-2; VSCN2; MLN 19; MLN-19; c-ERB2; c-ERB-2; HER-2/neu; p185(erbB2)

## Contact

	400-999-6126
--	--------------

	cn.market@abclonal.com.cn
--	---------------------------

	www.abclonal.com.cn
--	---------------------

## Product Information

**Source**

Rabbit

**Isotype**

IgG

**Purification**

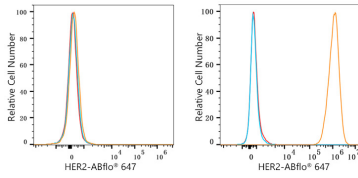
Affinity purification

**Storage**

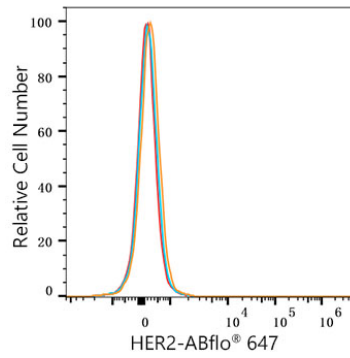
Store at 2-8°C. Avoid freeze.

Buffer: PBS with 0.03% proclin300,0.2% BSA,pH7.3.

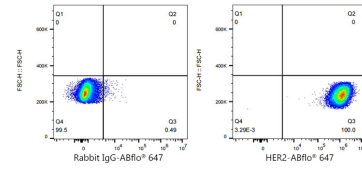
## Validation Data



Flow cytometry:  $1 \times 10^6$  HL-60 cells (negative control, Left) and SK-BR-3 cells (right) were surface-stained with ABflo® 647 Rabbit anti-Human HER2/ErbB2 mAb (A23183, 5  $\mu$ l/Test, orange line) or ABflo® 647 Rabbit IgG isotype control (A22070, 5  $\mu$ l/Test, blue line). Non-fluorescently stained cells were used as blank control (red line).



Flow cytometry:  $1 \times 10^6$  HL-60 cells (negative control) were surface-stained with ABflo® 647 Rabbit anti-Human HER2/ErbB2 mAb (A23183, 5  $\mu$ l/Test, orange line) or ABflo® 647 Rabbit IgG isotype control (A22070, 5  $\mu$ l/Test, blue line). Non-fluorescently stained HL-60 cells were used as blank control (red line).



Flow cytometry:  $1 \times 10^6$  SK-BR-3 cells were surface-stained with ABflo® 647 Rabbit IgG isotype control (A22070, 5  $\mu$ l/Test, left) or ABflo® 647 Rabbit anti-Human HER2/ErbB2 mAb (A23183, 5  $\mu$ l/Test, right).