

# Human IgE Rabbit mAb

Catalog No.: A23194 **Recombinant**

## Basic Information

### Observed MW

55kDa

### Calculated MW

47kDa

### Category

Primary antibody

### Applications

WB,FC,ELISA

### Cross-Reactivity

Human

### CloneNo number

ARC60066

## Background

IgE is the class of antibodies produced in the lungs, skin, and mucous membranes. It may protect against parasite invasion, but it is a major factor in allergic reactions. The antigen-specific IgE interacts with mast cells and eosinophils, triggers the release of histamine, leukotrienes and other substances that lead to the itching, sneezing and congestion of allergies - and the life threatening respiratory distress of asthma and anaphylactic shock

## Recommended Dilutions

**WB** 1:500 - 1:1000

**FC** 1:500 - 1:1000

**ELISA** Recommended starting concentration is 1 µg/mL. Please optimize the concentration based on your specific assay requirements.

## Immunogen Information

### Gene ID

3497

### Swiss Prot

P01854

### Immunogen

Recombinant fusion protein containing a sequence corresponding to amino acids 104-428 of human IgE (P01854).

### Synonyms

Igh2; IGHE; IGHEP1; Human IgE

## Contact

☎ | 400-999-6126

✉ | [cn.market@abclonal.com.cn](mailto:cn.market@abclonal.com.cn)

🌐 | [www.abclonal.com.cn](http://www.abclonal.com.cn)

## Product Information

### Source

Rabbit

### Isotype

IgG

### Purification

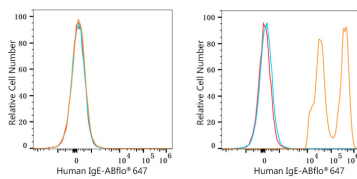
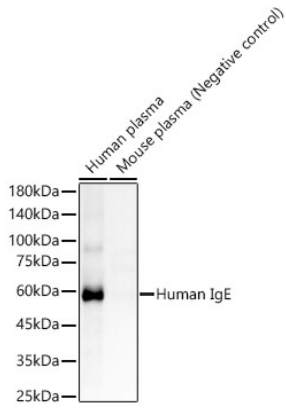
Affinity purification

### Storage

Store at -20°C. Avoid freeze / thaw cycles.

Buffer: PBS with 0.05% proclin300,0.05% BSA,50% glycerol,pH7.3.

## Validation Data



Flow cytometry:  $1 \times 10^6$  HeLa cells (negative control, left) and Human PBMC (right) were surface-stained with Human IgE Rabbit mAb (A23194, 2 µg/mL, orange line) or ABflo® 647 Rabbit IgG isotype control (A22070, 5 µl/Test, blue line), followed by Alexa Fluor® 647 conjugated goat anti-rabbit pAb staining. Non-fluorescently stained cells were used as blank control (red line).