

Mouse IgE Rabbit mAb

Catalog No.: A23195 **Recombinant**

Basic Information

Observed MW

75kDa

Calculated MW

Category

Primary antibody

Applications

ELISA, WB

Cross-Reactivity

Mouse

CloneNo number

ARC60081

Background

Recommended Dilutions

WB 1:1000 - 1:5000

Immunogen Information

Gene ID

Swiss Prot

Immunogen

Recombinant fusion protein containing a sequence corresponding to amino acids 50-388 of mouse IgE. (AAZ05128.1).

Synonyms

Contact

☎ | 400-999-6126

✉ | cn.market@abclonal.com.cn

🌐 | www.abclonal.com.cn

Product Information

Source

Rabbit

Isotype

IgG

Purification

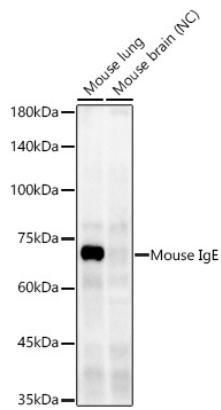
Affinity purification

Storage

Store at -20°C. Avoid freeze / thaw cycles.

Buffer: PBS with 0.05% proclin300, 0.05% BSA, 50% glycerol, pH7.3.

Validation Data



Western blot analysis of various lysates using Mouse IgE Rabbit mAb (A23195) at 1:2000 dilution.
Secondary antibody: HRP Goat Anti-Mouse IgG (H+L) (AS003) at 1:10000 dilution.
Lysates/proteins: 25 μ g per lane.
Blocking buffer: 3% nonfat dry milk in TBST.
Detection: ECL Enhanced Kit (RM00021).
Negative control (NC): Mouse brain
Exposure time: 120s.