

[KO Validated] IκBα Rabbit pAb

Catalog No.: A23223 **KO** Validated

Basic Information

Observed MW

40kDa

Calculated MW

35kDa

Category

Primary antibody

Applications

ELISA, WB

Cross-Reactivity

Human, Mouse, Rat

Background

Enables NF-kappaB binding activity and heat shock protein binding activity. Involved in several processes, including cytoplasmic sequestering of NF-kappaB; leukocyte migration involved in inflammatory response; and liver regeneration. Acts upstream of or within cellular response to cytokine stimulus and cellular response to organic cyclic compound. Located in cytosol and nucleus. Part of protein-containing complex. Used to study gastritis; pulmonary emphysema; and sciatic neuropathy. Biomarker of several diseases, including acute necrotizing pancreatitis; alcoholic hepatitis; artery disease (multiple); middle cerebral artery infarction; and toxic shock syndrome. Human ortholog(s) of this gene implicated in several diseases, including childhood-onset asthma; hematologic cancer (multiple); hepatitis B; hepatitis C; and lung disease (multiple). Orthologous to human NFKBIA (NFKB inhibitor alpha).

Recommended Dilutions

WB 1:500 - 1:2000

Immunogen Information

Gene ID

25493

Swiss Prot

Q63746

Immunogen

Recombinant protein of rat IκBα.

Synonyms

RL/IF-1; Bα

Contact

 | 400-999-6126 | cn.market@abclonal.com.cn | www.abclonal.com.cn

Product Information

Source

Rabbit

Isotype

IgG

Purification

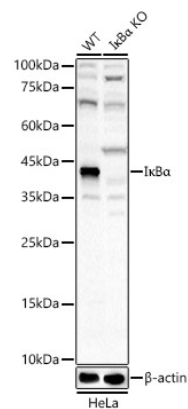
Affinity purification

Storage

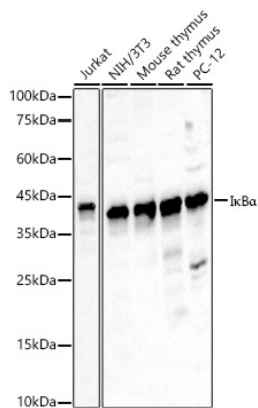
Store at -20°C. Avoid freeze / thaw cycles.

Buffer: PBS with 0.02% sodium azide, 50% glycerol, pH7.3.

Validation Data



Western blot analysis of lysates from wild type (WT) and IκBα knockout (KO) HeLa (KO) cells, using [KO Validated] IκBα Rabbit pAb (A23223) at 1:2000 dilution.
Secondary antibody: HRP Goat Anti-Rabbit IgG (H+L) (AS014) at 1:10000 dilution.
Lysates/proteins: 25μg per lane.
Blocking buffer: 3% nonfat dry milk in TBST.
Detection: ECL Basic Kit (RM00020).
Exposure time: 90s.



Western blot analysis of various lysates, using [KO Validated] IκBα Rabbit pAb (A23223) at 1:2000 dilution.
Secondary antibody: HRP Goat Anti-Rabbit IgG (H+L) (AS014) at 1:10000 dilution.
Lysates/proteins: 25μg per lane.
Blocking buffer: 3% nonfat dry milk in TBST.
Detection: ECL Basic Kit (RM00020).
Exposure time: 90s.