

IL17A Rabbit mAb

Catalog No.: A23226 **Recombinant** **1 Publications**

Basic Information

Observed MW

17kDa

Calculated MW

17kDa

Category

Primary antibody

Applications

WB,ELISA

Cross-Reactivity

Mouse

CloneNo number

ARC57567

Background

This gene encodes a pro-inflammatory cytokine that is a member of the interleukin-17 family. The encoded protein plays a central role in host defense against diverse pathogens. The encoded protein is produced by activated T-cells and certain cell types of innate immune system. The active protein functions as either a homodimer with other interleukin-17 family members and signals through the interleukin-17 receptor to induce inflammatory cytokine production. Aberrant expression of this gene is associated with autoinflammatory diseases including rheumatoid arthritis, psoriasis and multiple sclerosis.

Recommended Dilutions

WB 1:500 - 1:1000

ELISA Recommended starting concentration is 1 µg/mL. Please optimize the concentration based on your specific assay requirements.

Immunogen Information

Gene ID

16171

Swiss Prot

Q62386

Immunogen

Recombinant fusion protein containing a sequence corresponding to amino acids 26-158 of mouse IL17A. (NP_034682.1).

Synonyms

Il17; CtlA8; IL-17; CtlA-8; IL-17A; IL17A

Contact

☎ | 400-999-6126

✉ | cn.market@abclonal.com.cn

🌐 | www.abclonal.com.cn

Product Information

Source

Rabbit

Isotype

IgG

Purification

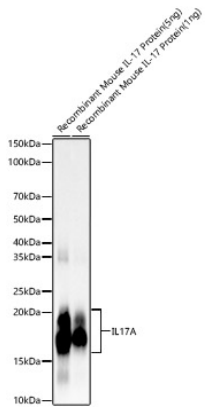
Affinity purification

Storage

Store at -20°C. Avoid freeze / thaw cycles.

Buffer: PBS with 0.05% proclin300,0.05% BSA,50% glycerol,pH7.3.

Validation Data



Western blot analysis of Recombinant Mouse IL-17A/CTLA-8 Protein (RP01460), using IL17A Rabbit mAb (A23226) at 1:1000 dilution.

Secondary antibody: HRP-conjugated Goat anti-Rabbit IgG (H+L) (AS014) at 1:10000 dilution.

Lysates/proteins: 5ng/1ng per lane.

Blocking buffer: 3% nonfat dry milk in TBST.

Detection: ECL Basic Kit (RM00020).

Exposure time: 10s.