

[KO Validated] Von Hippel Lindau/VHL Rabbit mAb

Catalog No.: A23239 **KO Validated** **Recombinant** **2 Publications**

Basic Information

Observed MW

18-24kDa

Calculated MW

24kDa

Category

Primary antibody

Applications

WB,Auto WB,ELISA

Cross-Reactivity

Human, Mouse, Rat

CloneNo number

ARC59984

Background

This gene encodes a component of a ubiquitination complex. The encoded protein is involved in the ubiquitination and degradation of hypoxia-inducible-factor (HIF), which is a transcription factor that plays a central role in the regulation of gene expression by oxygen. In addition to oxygen-related gene expression, this protein plays a role in many other cellular processes including cilia formation, cytokine signaling, regulation of senescence, and formation of the extracellular matrix. Variants of this gene are associated with von Hippel-Lindau syndrome, pheochromocytoma, erythrocytosis, renal cell carcinoma, and cerebellar hemangioblastoma.

Recommended Dilutions

WB 1:500 - 1:2000

Auto WB 1:100 - 1:500

ELISA Recommended starting concentration is 1 µg/mL. Please optimize the concentration based on your specific assay requirements.

Immunogen Information

Gene ID

7428

Swiss Prot

P40337

Immunogen

Recombinant protein (or fragment). This information is considered to be commercially sensitive.

Synonyms

RCA1; VHL1; pVHL; HRCA1; Von Hippel Lindau/VHL

Contact

☎ | 400-999-6126

✉ | cn.market@abclonal.com.cn

🌐 | www.abclonal.com.cn

Product Information

Source

Rabbit

Isotype

IgG

Purification

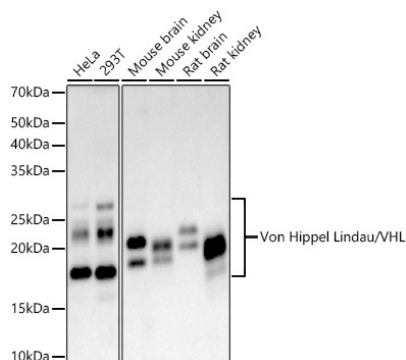
Affinity purification

Storage

Store at -20°C. Avoid freeze / thaw cycles.

Buffer: PBS with 0.09% Sodium azide, 0.05% BSA, 50% glycerol, pH7.3.

Validation Data



Western blot analysis of various lysates, using [KO Validated] Von Hippel Lindau/VHL Rabbit mAb (A23239) at 1:1000 dilution.

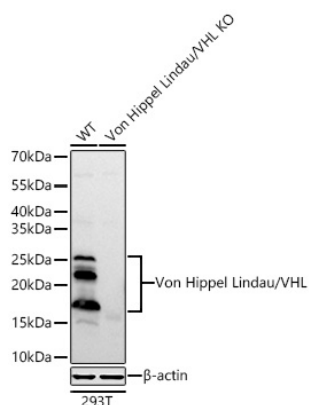
Secondary antibody: HRP-conjugated Goat anti-Rabbit IgG (H+L) (AS014) at 1:10000 dilution.

Lysates/proteins: 25µg per lane.

Blocking buffer: 3% nonfat dry milk in TBST.

Detection: ECL Basic Kit (RM00020).

Exposure time: 45s.



Western blot analysis of lysates from wild type (WT) and Von Hippel Lindau/VHL knockout (KO) 293T cells using [KO Validated] Von Hippel Lindau/VHL Rabbit mAb (A23239) at 1:1000 dilution incubated overnight at 4°C.

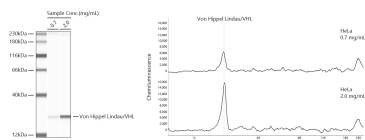
Secondary antibody: HRP-conjugated Goat anti-Rabbit IgG (H+L) (AS014) at 1:10000 dilution.

Lysates/proteins: 25 µg per lane.

Blocking buffer: 3% nonfat dry milk in TBST.

Detection: ECL Basic Kit (RM00020).

Exposure time: 90s.



Simple Western™ analysis of lysates from HeLa cells using [KO Validated] Von Hippel Lindau/VHL Rabbit mAb (A23239) at 1:100 dilution. The virtual lane view (left) shows the target band (as indicated) with samples in concentrations of 0.7 mg/mL and 2.0 mg/mL. The corresponding electropherogram view (right) plots chemiluminescence intensity against molecular weight along the capillary for sample concentrations of 0.7 mg/mL and 2.0 mg/mL. This experiment was performed under reducing conditions on the Jess™ Simple Western instrument from ProteinSimple, a BioTechne brand, using the 12-230 kDa separation module.