

Glutaredoxin 1 (GLRX) Rabbit mAb

Catalog No.: A23246 **Recombinant**

Basic Information

Observed MW

12kDa

Calculated MW

12kDa

Category

Primary antibody

Applications

ELISA, WB

Cross-Reactivity

Human, Mouse, Rat

CloneNo number

ARC59054

Background

This gene encodes a member of the glutaredoxin family. The encoded protein is a cytoplasmic enzyme catalyzing the reversible reduction of glutathione-protein mixed disulfides. This enzyme highly contributes to the antioxidant defense system. It is crucial for several signalling pathways by controlling the S-glutathionylation status of signalling mediators. It is involved in beta-amyloid toxicity and Alzheimer's disease. Multiple alternatively spliced transcript variants encoding the same protein have been identified.

Recommended Dilutions

WB 1:500 - 1:1000

Immunogen Information

Gene ID

2745

Swiss Prot

P35754

Immunogen

A synthetic peptide corresponding to a sequence within amino acids 11-106 of human Glutaredoxin 1 (GLRX) (NP_002055.1).

Synonyms

GRX; GRX1; Glutaredoxin 1 (GLRX)

Contact

☎ | 400-999-6126

✉ | cn.market@abclonal.com.cn

🌐 | www.abclonal.com.cn

Product Information

Source

Rabbit

Isotype

IgG

Purification

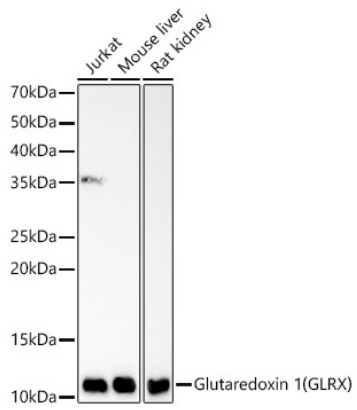
Affinity purification

Storage

Store at -20°C. Avoid freeze / thaw cycles.

Buffer: PBS with 0.05% proclin300, 0.05% BSA, 50% glycerol, pH7.3.

Validation Data



Western blot analysis of various lysates, using Glutaredoxin 1 (GLRX) Rabbit mAb (A23246) at 1:1000 dilution.

Secondary antibody: HRP Goat Anti-Rabbit IgG (H+L) (AS014) at 1:10000 dilution.

Lysates/proteins: 25µg per lane.

Blocking buffer: 3% nonfat dry milk in TBST.

Detection: ECL Basic Kit (RM00020).

Exposure time: 60s.