

CD107b Rabbit pAb

Catalog No.: A23260

Basic Information

Observed MW

102kDa

Calculated MW

46kDa

Category

Primary antibody

Applications

ELISA, WB

Cross-Reactivity

Mouse

Background

Enables protein domain specific binding activity. Involved in several processes, including autophagosome maturation; protein stabilization; and protein targeting to lysosome involved in chaperone-mediated autophagy. Acts upstream of or within muscle cell cellular homeostasis. Located in late endosome membrane; lysosomal membrane; and phagocytic vesicle membrane. Is integral component of autophagosome membrane. Is expressed in central nervous system; egg cylinder; lung; and retina. Used to study Danon disease. Human ortholog(s) of this gene implicated in Danon disease and hypertrophic cardiomyopathy. Orthologous to human LAMP2 (lysosomal associated membrane protein 2).

Recommended Dilutions

WB 1:500 - 1:1000

Immunogen Information

Gene ID

16784

Swiss Prot

P17047

Immunogen

Recombinant fusion protein containing a sequence corresponding to amino acids 26-189 of mouse CD107b. (NP_001017959.1).

Synonyms

Mac3; LGP-B; CD107b; Lamp-2; Lamp II; Lamp-2a; Lamp-2b; Lamp-2c

Contact

☎ | 400-999-6126

✉ | cn.market@abclonal.com.cn

🌐 | www.abclonal.com.cn

Product Information

Source

Rabbit

Isotype

IgG

Purification

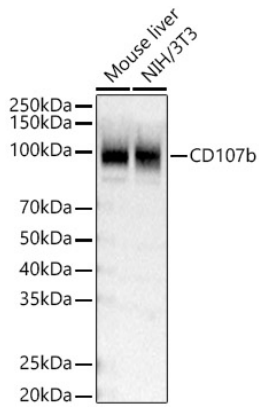
Affinity purification

Storage

Store at -20°C. Avoid freeze / thaw cycles.

Buffer: PBS with 0.01% thimerosal, 50% glycerol, pH7.3.

Validation Data



Western blot analysis of various lysates, using CD107b Rabbit pAb (A23260) at 1:3000 dilution.
Secondary antibody: HRP Goat Anti-Rabbit IgG (H+L) (AS014) at 1:10000 dilution.
Lysates/proteins: 25µg per lane.
Blocking buffer: 3% nonfat dry milk in TBST.
Detection: ECL Basic Kit (RM00020).
Exposure time: 3s.