

# MKP1 Rabbit pAb

Catalog No.: A23261

## Basic Information

### Observed MW

40kDa

### Calculated MW

39kDa

### Category

Primary antibody

### Applications

ELISA, WB

### Cross-Reactivity

Human, Mouse, Rat

## Background

Enables mitogen-activated protein kinase binding activity and phosphoprotein phosphatase activity. Involved in negative regulation of MAPK cascade; negative regulation of cell population proliferation; and protein dephosphorylation. Predicted to be active in cytoplasm and nucleus. Is expressed in several structures, including alimentary system; central nervous system; genitourinary system; limb; and sensory organ. Human ortholog(s) of this gene implicated in breast cancer. Orthologous to human DUSP1 (dual specificity phosphatase 1).

## Recommended Dilutions

WB 1:1000 - 1:5000

## Immunogen Information

### Gene ID

19252

### Swiss Prot

P28563

### Immunogen

Recombinant fusion protein containing a sequence corresponding to amino acids 1-172 of mouse MKP1. (NP\_038670.1).

### Synonyms

erp; MKP1; mkp-1; 3CH134; Ptpn16

## Contact

☎ | 400-999-6126

✉ | [cn.market@abclonal.com.cn](mailto:cn.market@abclonal.com.cn)

🌐 | [www.abclonal.com.cn](http://www.abclonal.com.cn)

## Product Information

### Source

Rabbit

### Isotype

IgG

### Purification

Affinity purification

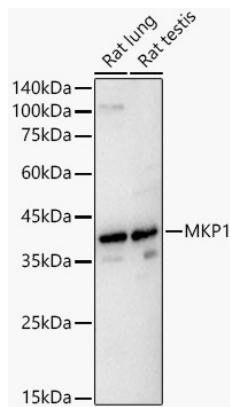
### Storage

Store at -20°C. Avoid freeze / thaw cycles.

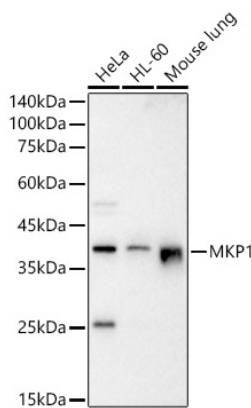
Buffer: PBS with 0.01% thimerosal, 50% glycerol, pH7.3.

## Validation Data

---



Western blot analysis of various lysates, using MKP1 Rabbit pAb (A23261) at 1:2000 dilution.  
Secondary antibody: HRP Goat Anti-Rabbit IgG (H+L) (AS014) at 1:10000 dilution.  
Lysates/proteins: 25µg per lane.  
Blocking buffer: 3% nonfat dry milk in TBST.  
Detection: ECL Basic Kit (RM00020).  
Exposure time: 2s.



Western blot analysis of various lysates, using MKP1 Rabbit pAb (A23261) at 1:2000 dilution.  
Secondary antibody: HRP Goat Anti-Rabbit IgG (H+L) (AS014) at 1:10000 dilution.  
Lysates/proteins: 25µg per lane.  
Blocking buffer: 3% nonfat dry milk in TBST.  
Detection: ECL Basic Kit (RM00020).  
Exposure time: 2s.