

CD275 Rabbit pAb

Catalog No.: A23266

Basic Information

Observed MW

65-75kDa

Calculated MW

36kDa

Category

Primary antibody

Applications

WB, ELISA

Cross-Reactivity

Mouse

Background

Predicted to enable identical protein binding activity and signaling receptor binding activity. Involved in positive regulation of interleukin-4 production. Located in external side of plasma membrane. Is integral component of plasma membrane. Is expressed in several structures, including extraembryonic component; gonad; hemolymphoid system gland; liver; and stomach. Orthologous to human ICOSLG (inducible T cell costimulator ligand).

Recommended Dilutions

WB 1:500 - 1:2000

ELISA Recommended starting concentration is 1 µg/mL. Please optimize the concentration based on your specific assay requirements.

Immunogen Information

Gene ID

50723

Swiss Prot

Q9JHJ8

Immunogen

Recombinant protein (or fragment). This information is considered to be commercially sensitive.

Synonyms

B7h; GI50; GL50; B7-H2; LICOS; B7RP-1; GL50-B; ICOS-L; Icoslg; Ly115I; mKIAA0653; CD275

Contact

☎ | 400-999-6126

✉ | cn.market@abclonal.com.cn

🌐 | www.abclonal.com.cn

Product Information

Source

Rabbit

Isotype

IgG

Purification

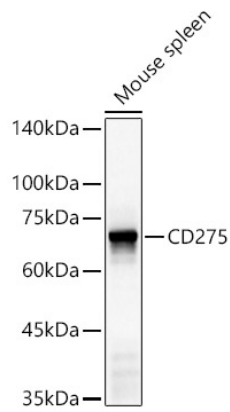
Affinity purification

Storage

Store at -20°C. Avoid freeze / thaw cycles.

Buffer: PBS containing 50% glycerol, preserved with proclin300 or sodium azide (as specified on the Certificate of Analysis), pH 7.3.

Validation Data



Western blot analysis of lysates from Mouse spleen, using CD275 Rabbit pAb (A23266) at 1:1500 dilution.
Secondary antibody: HRP-conjugated Goat anti-Rabbit IgG (H+L) (AS014) at 1:10000 dilution.
Lysates/proteins: 25 μ g per lane.
Blocking buffer: 3% nonfat dry milk in TBST.
Detection: ECL Basic Kit (RM00020).
Exposure time: 180s.