

# Villin1 Rabbit mAb

Catalog No.: A23273 **Recombinant**

## Basic Information

### Observed MW

93kDa

### Calculated MW

93kDa

### Category

Primary antibody

### Applications

ELISA, WB, IF/ICC

### Cross-Reactivity

Human, Mouse, Rat

### CloneNo number

ARC54733

## Background

This gene encodes a member of a family of calcium-regulated actin-binding proteins. This protein represents a dominant part of the brush border cytoskeleton which functions in the capping, severing, and bundling of actin filaments. Two mRNAs of 2.7 kb and 3.5 kb have been observed; they result from utilization of alternate poly-adenylation signals present in the terminal exon.

## Recommended Dilutions

**WB** 1:10000 - 1:30000

**IF/ICC** 1:50 - 1:200

## Immunogen Information

### Gene ID

7429

### Swiss Prot

P09327

### Immunogen

Recombinant fusion protein containing a sequence corresponding to amino acids 1-827 of human Villin1 (NP\_009058.2).

### Synonyms

VIL; D2S1471; Villin1

## Contact

☎ | 400-999-6126

✉ | [cn.market@abclonal.com.cn](mailto:cn.market@abclonal.com.cn)

🌐 | [www.abclonal.com.cn](http://www.abclonal.com.cn)

## Product Information

### Source

Rabbit

### Isotype

IgG

### Purification

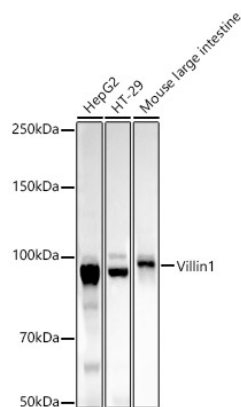
Affinity purification

### Storage

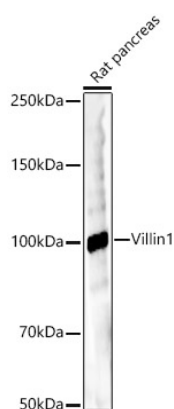
Store at -20°C. Avoid freeze / thaw cycles.

Buffer: PBS with 0.05% proclin300, 0.05% BSA, 50% glycerol, pH7.3.

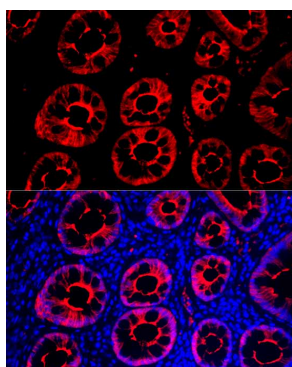
## Validation Data



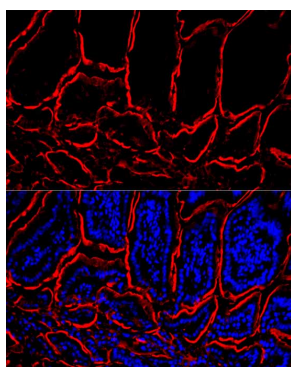
Western blot analysis of various lysates, using Villin1 Rabbit mAb (A23273) at 1:25000 dilution.  
 Secondary antibody: HRP Goat Anti-Rabbit IgG (H+L) (AS014) at 1:10000 dilution.  
 Lysates/proteins: 25µg per lane.  
 Blocking buffer: 3% nonfat dry milk in TBST.  
 Detection: ECL Basic Kit (RM00020).  
 Exposure time: 180s.



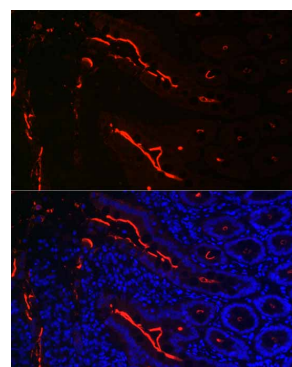
Western blot analysis of Rat pancreas, using Villin1 Rabbit mAb (A23273) at 1:25000 dilution.  
 Secondary antibody: HRP Goat Anti-Rabbit IgG (H+L) (AS014) at 1:10000 dilution.  
 Lysates/proteins: 25µg per lane.  
 Blocking buffer: 3% nonfat dry milk in TBST.  
 Detection: ECL Basic Kit (RM00020).  
 Exposure time: 180s.



Perform high pressure antigen retrieval with 10 mM citrate buffer pH 6.0 before commencing with IF staining protocol. Immunofluorescence analysis of human colon using Villin1 Rabbit mAb (A23273) at dilution of 1:100 (40x lens). Blue: DAPI for nuclear staining.



Perform high pressure antigen retrieval with 10 mM citrate buffer pH 6.0 before commencing with IF staining protocol. Immunofluorescence analysis of mouse small intestine using Villin1 Rabbit mAb (A23273) at dilution of 1:100 (40x lens). Blue: DAPI for nuclear staining.



Perform high pressure antigen retrieval with 10 mM citrate buffer pH 6.0 before commencing with IF staining protocol. Immunofluorescence analysis of rat small intestine using Villin1 Rabbit mAb (A23273) at dilution of 1:100 (40x lens). Blue: DAPI for nuclear staining.