

# PARG Rabbit mAb

Catalog No.: A23276 **Recombinant**

## Basic Information

### Observed MW

Refer to figures

### Calculated MW

111kDa

### Category

Primary antibody

### Applications

ELISA, IHC-P

### Cross-Reactivity

Mouse, Rat

### CloneNo number

ARC59258

## Background

Poly(ADP-ribose) glycohydrolase (PARG) is the major enzyme responsible for the catabolism of poly(ADP-ribose), a reversible covalent-modifier of chromosomal proteins. The protein is found in many tissues and may be subject to proteolysis generating smaller, active products. Several transcript variants encoding different isoforms have been found for this gene.

## Recommended Dilutions

IHC-P 1:50 - 1:200

## Immunogen Information

### Gene ID

8505

### Swiss Prot

Q86W56

### Immunogen

Recombinant fusion protein containing a sequence corresponding to amino acids 777-976 of human PARG. (NP\_003622.2).

### Synonyms

PARG99; PARG?

## Contact

☎ | 400-999-6126

✉ | [cn.market@abclonal.com.cn](mailto:cn.market@abclonal.com.cn)

🌐 | [www.abclonal.com.cn](http://www.abclonal.com.cn)

## Product Information

### Source

Rabbit

### Isotype

IgG

### Purification

Affinity purification

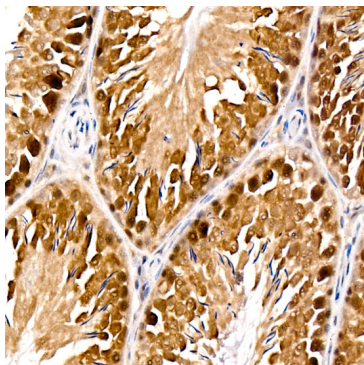
### Storage

Store at -20°C. Avoid freeze / thaw cycles.

Buffer: PBS with 0.05% proclin300, 0.05% BSA, 50% glycerol, pH7.3.

## Validation Data

---



Immunohistochemistry analysis of paraffin-embedded Rat testis using PARG Rabbit mAb (A23276) at dilution of 1:100 (40x lens). High pressure antigen retrieval performed with 0.01M Citrate Bufferr (pH 6.0) prior to IHC staining.