

CD89 Rabbit mAb

Catalog No.: A23280 **Recombinant**

Basic Information

Observed MW

37-75kDa

Calculated MW

19-32kDa

Category

Primary antibody

Applications

ELISA,WB,FC

Cross-Reactivity

Human

CloneNo number

ARC59840

Background

This gene is a member of the immunoglobulin gene superfamily and encodes a receptor for the Fc region of IgA. The receptor is a transmembrane glycoprotein present on the surface of myeloid lineage cells such as neutrophils, monocytes, macrophages, and eosinophils, where it mediates immunologic responses to pathogens. It interacts with IgA-opsonized targets and triggers several immunologic defense processes, including phagocytosis, antibody-dependent cell-mediated cytotoxicity, and stimulation of the release of inflammatory mediators. Multiple alternatively spliced transcript variants encoding different isoforms have been described for this gene.

Recommended Dilutions

WB	1:1000 - 1:5000
FC	1:500 - 1:1000

Immunogen Information

Gene ID

2204

Swiss Prot

P24071

Immunogen

Recombinant fusion protein containing a sequence corresponding to amino acids 22-227 of human CD89 (NP_001991.1).

Synonyms

CD89; FcalphaR; FcalphaRI; CTB-61M7.2; FCAR

Contact

 | 400-999-6126 | cn.market@abclonal.com.cn | www.abclonal.com.cn

Product Information

Source

Rabbit

Isotype

IgG

Purification

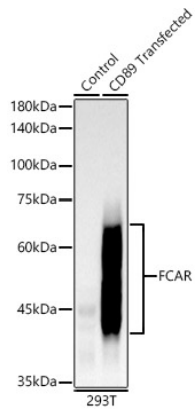
Affinity purification

Storage

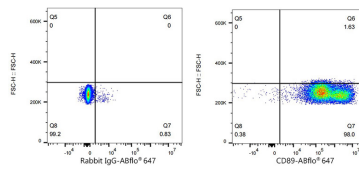
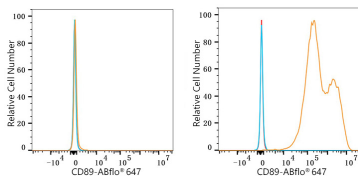
Store at -20°C. Avoid freeze / thaw cycles.

Buffer: PBS with 0.05% proclin300,0.05% BSA,50% glycerol,pH7.3.

Validation Data



Western blot analysis of lysates from wild type (WT) and 293T cells transfected with CD89 using CD89 Rabbit mAb (A23280) at 1:1500 dilution. Secondary antibody: HRP Goat Anti-Rabbit IgG (H+L) (A5014) at 1:10000 dilution. Lysates/proteins: 25ug per lane. Blocking buffer: 3% nonfat dry milk in TBST. Detection: ECL Basic Kit (RM00020). Exposure time: 60s.



Flow cytometry: 1×10^6 293F cells (negative control, left) and 293F (Transfection, right) cells were surface-stained with CD89 Rabbit mAb (A23280, 2 $\mu\text{g}/\text{mL}$, orange line) or ABflo® 647 Rabbit IgG isotype control (A22070, 5 $\mu\text{g}/\text{Test}$, blue line), followed by Alexa Fluor® 647 conjugated goat anti-rabbit pAb staining. Non-fluorescently stained cells were used as blank control (red line).

Flow cytometry: 1×10^6 293F (Transfection) cells were surface-stained with ABflo® 647 Rabbit IgG isotype control (A22070, 5 $\mu\text{g}/\text{Test}$, left) or CD89 Rabbit mAb (A23280, 2 $\mu\text{g}/\text{mL}$, right).