

BLBP/FABP7 Rabbit mAb

Catalog No.: A23286 **Recombinant**

Basic Information

Observed MW

15kDa

Calculated MW

14kDa/18kDa

Category

Primary antibody

Applications

ELISA, WB, IF/ICC

Cross-Reactivity

Human, Mouse

CloneNo number

ARC60099

Background

The gene encodes a small, highly conserved cytoplasmic protein that bind long-chain fatty acids and other hydrophobic ligands. The encoded protein is important in the establishment of the radial glial fiber in the developing brain. Alternative splicing and promoter usage results in multiple transcript variants encoding different isoforms. Pseudogenes of this gene are found on multiple chromosomes.

Recommended Dilutions

WB	1:2000 - 1:6000
IF/ICC	1:50 - 1:200

Immunogen Information

Gene ID

2173

Swiss Prot

O15540

Immunogen

A synthetic peptide corresponding to a sequence within amino acids 1-100 of human BLBP/FABP7. (NP_001437.1).

Synonyms

MRG; BLBP; FABPB; B-FABP; BLBP/FABP7

Contact

☎ | 400-999-6126

✉ | cn.market@abclonal.com.cn

🌐 | www.abclonal.com.cn

Product Information

Source

Rabbit

Isotype

IgG

Purification

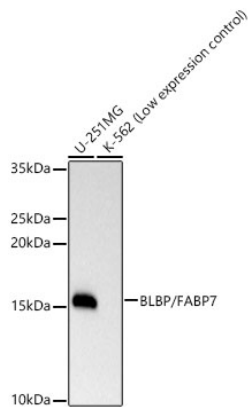
Affinity purification

Storage

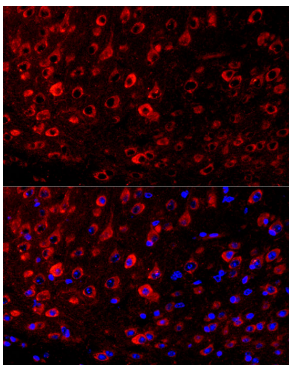
Store at -20°C. Avoid freeze / thaw cycles.

Buffer: PBS with 0.05% proclin300, 0.05% BSA, 50% glycerol, pH7.3.

Validation Data



Western blot analysis of various lysates, using BLBP/FABP7 Rabbit mAb (A23286) at 1:5000 dilution.
Secondary antibody: HRP Goat Anti-Rabbit IgG (H+L) (AS014) at 1:10000 dilution.
Lysates/proteins: 25µg per lane.
Blocking buffer: 3% nonfat dry milk in TBST.
Detection: ECL Basic Kit (RM00020).
Exposure time: 10s.



Perform microwave antigen retrieval with 10 mM citrate buffer pH 6.0 before commencing with IF staining protocol. Immunofluorescence analysis of paraffin-embedded mouse brain using BLBP/FABP7 Rabbit mAb (A23286) at dilution of 1:100 (40x lens). Secondary antibody: Cy3 Goat Anti-Rabbit IgG (H+L) (AS007) at 1:500 dilution. Blue: DAPI for nuclear staining.