

# SMARCA2 / BRM Rabbit mAb

Catalog No.: A23291 **Recombinant** **1 Publications**

## Basic Information

### Observed MW

220kDa

### Calculated MW

181kDa

### Category

Primary antibody

### Applications

ELISA, WB, IHC-P, IF/ICC, IP

### Cross-Reactivity

Human

### CloneNo number

ARC59944

## Background

The protein encoded by this gene is a member of the SWI/SNF family of proteins and is highly similar to the brahma protein of *Drosophila*. Members of this family have helicase and ATPase activities and are thought to regulate transcription of certain genes by altering the chromatin structure around those genes. The encoded protein is part of the large ATP-dependent chromatin remodeling complex SNF/SWI, which is required for transcriptional activation of genes normally repressed by chromatin. Alternatively spliced transcript variants encoding different isoforms have been found for this gene, which contains a trinucleotide repeat (CAG) length polymorphism.

## Recommended Dilutions

<b>WB</b>	1:500 - 1:1000
<b>IHC-P</b>	1:50 - 1:200
<b>IF/ICC</b>	1:50 - 1:200
<b>IP</b>	0.5µg-4µg antibody for 200µg-400µg extracts of whole cells

## Contact

	400-999-6126
	cn.market@abclonal.com.cn
	www.abclonal.com.cn

## Immunogen Information

### Gene ID

6595

### Swiss Prot

P51531

### Immunogen

A synthetic peptide corresponding to a sequence within amino acids 201-300 of human SMARCA2 (NP\_003061.3).

### Synonyms

BIS; BRM; SNF2; SWI2; hBRM; NCBRS; Sth1p; BAF190; SNF2L2; SNF2LA; hSNF2a; SMARCA2 / BRM

## Product Information

### Source

Rabbit

### Isotype

IgG

### Purification

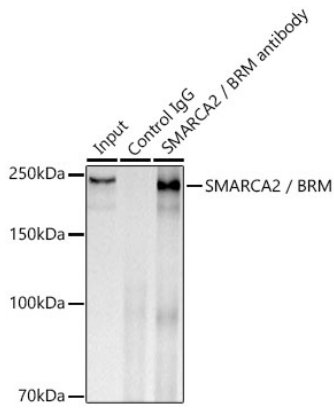
Affinity purification

### Storage

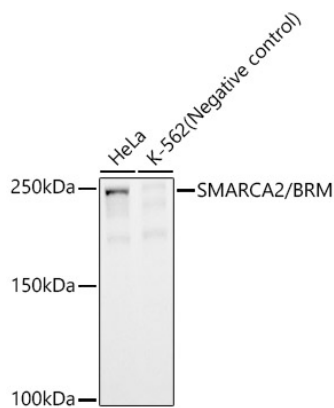
Store at -20°C. Avoid freeze / thaw cycles.

Buffer: PBS with 0.05% proclin300, 0.05% BSA, 50% glycerol, pH7.3.

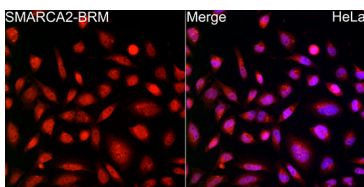
## Validation Data



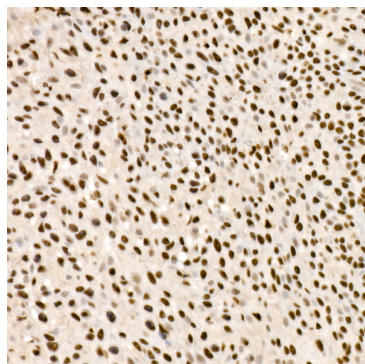
Immunoprecipitation analysis of 300 µg extracts of HeLa cells using 3 µg SMARCA2 / BRM Rabbit mAb (A23291). Western blot was performed from the immunoprecipitate using SMARCA2 / BRM Rabbit mAb (A23291) at a dilution of 1:5000.



Western blot analysis of various lysates, using SMARCA2 / BRM Rabbit mAb (A23291) at 1:1000 dilution. Secondary antibody: HRP Goat Anti-Rabbit IgG (H+L) (AS014) at 1:10000 dilution. Lysates/proteins: 25µg per lane. Blocking buffer: 3% nonfat dry milk in TBST. Detection: ECL Basic Kit (RM00020). Exposure time: 30s.



Immunofluorescence analysis of HeLa cells using SMARCA2 / BRM Rabbit mAb (A23291) at dilution of 1:100 (40x lens). Secondary antibody: Cy3 Goat Anti-Rabbit IgG (H+L) (AS007) at 1:500 dilution. Blue: DAPI for nuclear staining.



Immunohistochemistry analysis of paraffin-embedded human cervix cancer using SMARCA2 / BRM Rabbit mAb (A23291) at dilution of 1:200 (40x lens). Perform high pressure antigen retrieval with 10 mM citrate buffer pH 6.0 before commencing with IHC staining protocol.