

IGF2BP3/IMP3 Rabbit mAb

Catalog No.: A23295 **Recombinant** **1 Publications**

Basic Information

Observed MW

70kDa

Calculated MW

64kDa

Category

Primary antibody

Applications

ELISA, WB, IHC-P, IF/ICC, IP

Cross-Reactivity

Human, Mouse, Rat

CloneNo number

ARC60319

Background

The protein encoded by this gene is primarily found in the nucleolus, where it can bind to the 5' UTR of the insulin-like growth factor II leader 3 mRNA and may repress translation of insulin-like growth factor II during late development. The encoded protein contains several KH domains, which are important in RNA binding and are known to be involved in RNA synthesis and metabolism. A pseudogene exists on chromosome 7, and there are putative pseudogenes on other chromosomes.

Recommended Dilutions

WB	1:1000 - 1:5000
IHC-P	1:50 - 1:200
IF/ICC	1:50 - 1:200
IP	0.5µg-4µg antibody for 200µg-400µg extracts of whole cells

Contact

	400-999-6126
	cn.market@abclonal.com.cn
	www.abclonal.com.cn

Immunogen Information

Gene ID

10643

Swiss Prot

O00425

Immunogen

Recombinant fusion protein containing a sequence corresponding to amino acids 300-579 of human IGF2BP3/IMP3 [NP_006538.2].

Synonyms

KOC; CT98; IMP3; KOC1; IMP-3; VICKZ3; IGF2BP3/IMP3

Product Information

Source

Rabbit

Isotype

IgG

Purification

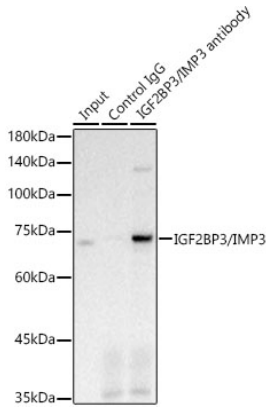
Affinity purification

Storage

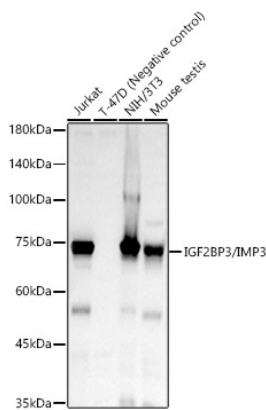
Store at -20°C. Avoid freeze / thaw cycles.

Buffer: PBS with 0.05% proclin300, 0.05% BSA, 50% glycerol, pH7.3.

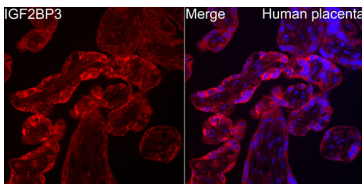
Validation Data



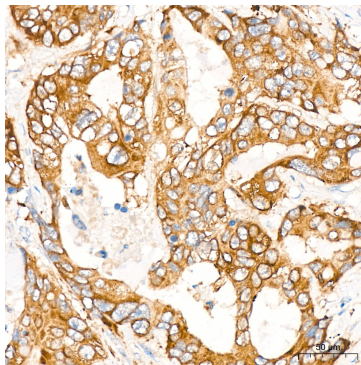
Immunoprecipitation analysis of 3 µg extracts of SH-SY5Y cells using 300µg IGF2BP3/IMP3 Rabbit mAb (A23295). Western blot was performed from the immunoprecipitate using IGF2BP3/IMP3 Rabbit mAb (A23295) at a dilution of 1:2000.



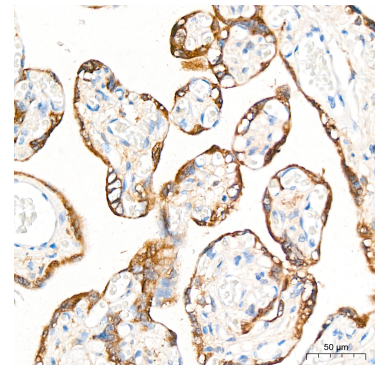
Western blot analysis of various lysates, using IGF2BP3/IMP3 Rabbit mAb (A23295) at 1:2000 dilution. Secondary antibody: HRP Goat Anti-Rabbit IgG (H+L) (AS014) at 1:10000 dilution. Lysates/proteins: 25µg per lane. Blocking buffer: 3% nonfat dry milk in TBST. Detection: ECL Basic Kit (RM00020). Exposure time: 30s.



Immunofluorescence analysis of paraffin-embedded human placenta using IGF2BP3/IMP3 Rabbit mAb (A23295) at dilution of 1:50 (40x lens). Secondary antibody: Cy3 Goat Anti-Rabbit IgG (H+L) (AS007) at 1:500 dilution. Blue: DAPI for nuclear staining.

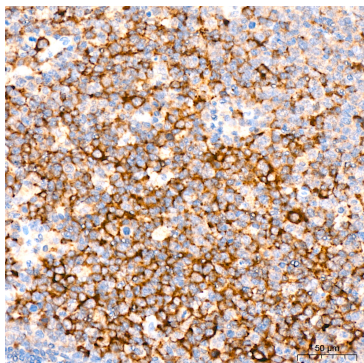


Immunohistochemistry analysis of IGF2BP3/IMP3 in paraffin-embedded human colon carcinoma tissue using IGF2BP3/IMP3 Rabbit mAb (A23295) at a dilution of 1:200 (40x lens). High pressure antigen retrieval was performed with 0.01 M citrate buffer (pH 6.0) prior to IHC staining.



Immunohistochemistry analysis of IGF2BP3/IMP3 in paraffin-embedded human placenta tissue using IGF2BP3/IMP3 Rabbit mAb (A23295) at a dilution of 1:200 (40x lens). High pressure antigen retrieval was performed with 0.01 M citrate buffer (pH 6.0) prior to IHC staining.

Validation Data



Immunohistochemistry analysis of IGF2BP3/IMP3 in paraffin-embedded human tonsil tissue using IGF2BP3/IMP3 Rabbit mAb (A23295) at a dilution of 1:200 (40x lens). High pressure antigen retrieval was performed with 0.01 M citrate buffer (pH 6.0) prior to IHC staining.