

# CD26/DPP4 Rabbit mAb

Catalog No.: A23297 **Recombinant**

## Basic Information

### Observed MW

### Calculated MW

88kDa

### Category

Primary antibody

### Applications

ELISA, WB, IP, FC

### Cross-Reactivity

Human

### CloneNo number

ARC59223

## Background

The DPP4 gene encodes dipeptidyl peptidase 4, which is identical to adenosine deaminase complexing protein-2, and to the T-cell activation antigen CD26. It is an intrinsic type II transmembrane glycoprotein and a serine exopeptidase that cleaves X-proline dipeptides from the N-terminus of polypeptides. Dipeptidyl peptidase 4 is highly involved in glucose and insulin metabolism, as well as in immune regulation. This protein was shown to be a functional receptor for Middle East respiratory syndrome coronavirus (MERS-CoV), and protein modeling suggests that it may play a similar role with SARS-CoV-2, the virus responsible for COVID-19.

## Recommended Dilutions

<b>WB</b>	1:1000 - 1:5000
<b>IP</b>	0.5µg-4µg antibody for 200µg-400µg extracts of whole cells
<b>FC</b>	1:50 - 1:200

## Immunogen Information

### Gene ID

1803

### Swiss Prot

P27487

### Immunogen

Recombinant fusion protein containing a sequence corresponding to amino acids 29-766 of human CD26/DPP4(NP\_001926.2)

### Synonyms

CD26; ADABP; ADCP2; DPPIV; TP103; CD26/DPP4

## Contact

☎ | 400-999-6126

✉ | [cn.market@abclonal.com.cn](mailto:cn.market@abclonal.com.cn)

🌐 | [www.abclonal.com.cn](http://www.abclonal.com.cn)

## Product Information

### Source

Rabbit

### Isotype

IgG

### Purification

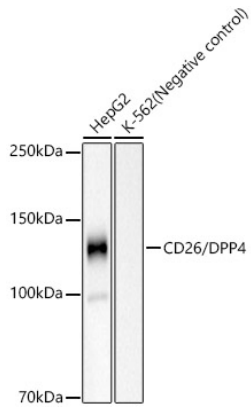
Affinity purification

### Storage

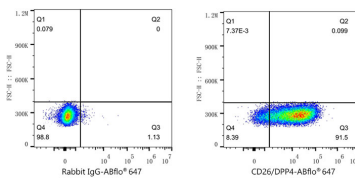
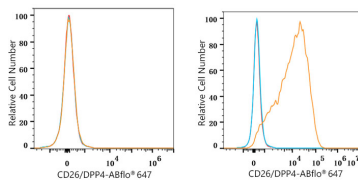
Store at -20°C. Avoid freeze / thaw cycles.

Buffer: PBS with 0.05% proclin300, 0.05% BSA, 50% glycerol, pH7.3.

## Validation Data



Western blot analysis of various lysates, using CD26/DPP4 Rabbit mAb (A23297) at 1:1500 dilution. Secondary antibody: HRP Goat Anti-Rabbit IgG (H+L) (AS014) at 1:10000 dilution. Lysates/proteins: 25µg per lane. Blocking buffer: 3% nonfat dry milk in TBST. Detection: ECL Basic Kit (RM00020). Exposure time: 60s.



Flow cytometry:  $1 \times 10^6$  K-562 cells (negative control, left) and NCI-H2452 cells (right) were surface-stained with CD26/DPP4 Rabbit mAb (A23297, 2 µg/mL, orange line) or ABflo® 647 Rabbit IgG isotype control (A22070, 5 µl/Test, blue line), followed by Alexa Fluor® 647 conjugated goat anti-rabbit pAb staining. Non-fluorescently stained cells were used as blank control (red line).

Flow cytometry:  $1 \times 10^6$  NCI-H2452 cells were surface-stained with ABflo® 647 Rabbit IgG isotype control (A22070, 5 µl/Test, left) or CD26/DPP4 Rabbit mAb (A23297, 2 µg/mL, right).