

# ABflo® 488 Rabbit anti-Mouse CD59a mAb

Catalog No.: A23361

## Basic Information

### Observed MW

### Calculated MW

14kDa

### Category

Primary antibody

### Applications

FC

### Cross-Reactivity

Mouse

### CloneNo number

ARC57958

### Conjugate

ABflo® 488. Ex:491nm. Em:516nm.

## Recommended Dilutions

FC 5 µl per 10<sup>6</sup> cells in  
100 µl volume

## Background

Predicted to enable complement binding activity. Involved in several processes, including negative regulation of angiogenesis; negative regulation of fibroblast growth factor production; and negative regulation of vascular endothelial growth factor receptor signaling pathway. Acts upstream of or within negative regulation of activation of membrane attack complex. Located in external side of plasma membrane. Is expressed in several structures, including Meckel's cartilage; nervous system; neural retina; skeleton; and testis. Human ortholog(s) of this gene implicated in colorectal carcinoma and ovarian cancer. Orthologous to human CD59 (CD59 molecule (CD59 blood group)).

## Immunogen Information

### Gene ID

12509

### Swiss Prot

O55186

### Immunogen

Recombinant protein (or fragment). This information is considered to be commercially sensitive.

### Synonyms

Cd59; MACIF; MAC-IP

## Contact

 | 400-999-6126

 | [cn.market@abclonal.com.cn](mailto:cn.market@abclonal.com.cn)

 | [www.abclonal.com.cn](http://www.abclonal.com.cn)

## Product Information

### Source

Rabbit

### Isotype

IgG

### Purification

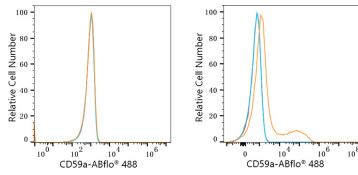
Affinity purification

### Storage

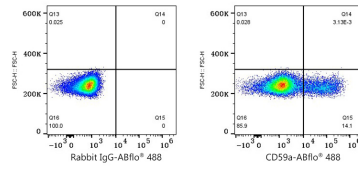
Store at 2-8°C. Avoid freeze.

Buffer: PBS containing 0.2% BSA, preserved with proclin300 or sodium azide (as specified on the Certificate of Analysis), pH 7.3.

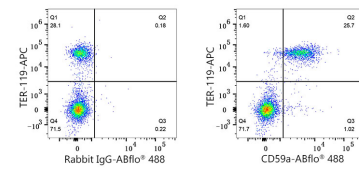
## Validation Data



Flow cytometry:  $1 \times 10^6$  293F cells (negative control, left) and 293F (Transfection, right) cells were surface-stained with ABflo® 488 Rabbit anti-Mouse CD59a mAb (A23361, 5 µl/Test, orange line) or ABflo® 488 Rabbit IgG isotype control (A22069, 5 µl/Test, blue line). Non-fluorescently stained cells were used as blank control (red line).



Flow cytometry:  $1 \times 10^6$  293F (Transfection) cells were surface-stained with ABflo® 488 Rabbit IgG isotype control (A22070, 5 µl/Test, left) or ABflo® 488 Rabbit anti-Mouse CD59a mAb (A23361, 5 µl/Test, right).



Flow cytometry:  $1 \times 10^6$  C57BL/6 mouse bone marrow cell were surface-stained with FITC Anti-Mouse TER-119 mAb (A25656, 0.5 µg) and ABflo® 488 Rabbit IgG isotype control (A22069, 5 µl/Test, left) or ABflo® 488 Rabbit anti-Mouse CD59a mAb (A23361, 5 µl/Test, Right).