

# ABflo® 594 Rabbit anti-Human CR2/CD21 mAb

Catalog No.: A23367

## Basic Information

### Observed MW

**Calculated MW**  
113kDa

**Category**  
Primary antibody

**Applications**  
FC

**Cross-Reactivity**  
Human

**CloneNo number**  
ARC56643

**Conjugate**  
ABflo® 594. Ex:588nm. Em:604nm.

## Background

This gene encodes a membrane protein, which functions as a receptor for Epstein-Barr virus (EBV) binding on B and T lymphocytes. Genetic variations in this gene are associated with susceptibility to systemic lupus erythematosus type 9 (SLEB9). Alternatively spliced transcript variants encoding different isoforms have been found for this gene.

## Recommended Dilutions

**FC** 5 µl per 10<sup>6</sup> cells in  
100 µl volume

## Immunogen Information

| Gene ID | Swiss Prot |
|---------|------------|
| 1380    | P20023     |

### Immunogen

Recombinant protein (or fragment). This information is considered to be commercially sensitive.

### Synonyms

CR; C3DR; CD21; CVID7; SLEB9

## Contact

|   |                           |
|---|---------------------------|
| ☎ | 400-999-6126              |
| ✉ | cn.market@abclonal.com.cn |
| 🌐 | www.abclonal.com.cn       |

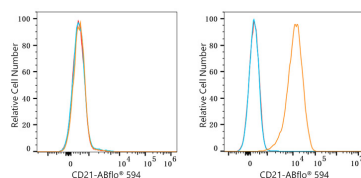
## Product Information

| Source | Isotype | Purification          |
|--------|---------|-----------------------|
| Rabbit | IgG     | Affinity purification |

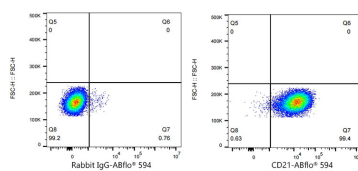
### Storage

Store at 2-8°C. Avoid freeze.  
Buffer: PBS containing 0.2% BSA, preserved with proclin300 or sodium azide (as specified on the Certificate of Analysis), pH 7.3.

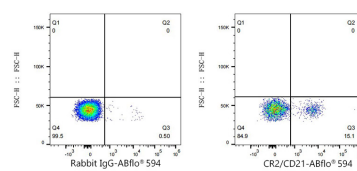
## Validation Data



Flow cytometry:  $1 \times 10^6$  HAP1 cells (negative control, left) and Daudi cells (right) were surface-stained with ABflo® 594 Rabbit anti-Human CR2/CD21 mAb (A23367, 5 µl/Test, orange line) or ABflo® 594 Rabbit IgG isotype control (A23821, 5 µl/Test, blue line). Non-fluorescently stained cells were used as blank control (red line).



Flow cytometry:  $1 \times 10^6$  Daudi cells were surface-stained with ABflo® 594 Rabbit IgG isotype control (5 µl/Test, left) or ABflo® 594 Rabbit anti-Human CR2/CD21 mAb (A23367, 5 µl/Test, right).



Flow cytometry:  $1 \times 10^6$  Human PBMC were surface-stained with ABflo® 594 Rabbit IgG isotype control (A23821, 5 µl/Test, left) or ABflo® 594 Rabbit anti-Human CR2/CD21 mAb (A23367, 5 µl/Test, right).