

CD23 Rabbit mAb

Catalog No.: A23376 **Recombinant**

Basic Information

Observed MW

46kDa

Calculated MW

38kDa

Category

Primary antibody

Applications

ELISA, WB

Cross-Reactivity

Human, Mouse

CloneNo number

ARC60396

Background

Predicted to enable carbohydrate binding activity. Acts upstream of or within positive regulation of humoral immune response mediated by circulating immunoglobulin. Located in external side of plasma membrane. Orthologous to human FCER2 (Fc fragment of IgE receptor II).

Recommended Dilutions

WB 1:500 - 1:1000

Immunogen Information

Gene ID

14128

Swiss Prot

P20693

Immunogen

Recombinant fusion protein containing a sequence corresponding to amino acids 50-331 of mouse CD23 (NP_038545.1).

Synonyms

CD23; Fce2; Fcer2; Ly-42

Contact

 | 400-999-6126

 | cn.market@abclonal.com.cn

 | www.abclonal.com.cn

Product Information

Source

Rabbit

Isotype

IgG

Purification

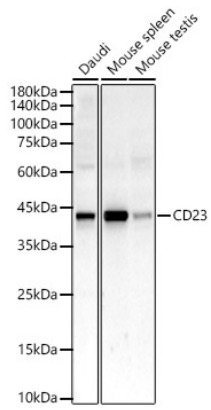
Affinity purification

Storage

Store at -20°C. Avoid freeze / thaw cycles.

Buffer: PBS with 0.05% proclin300, 0.05% BSA, 50% glycerol, pH7.3.

Validation Data



Western blot analysis of various lysates, using CD23 Rabbit mAb (A23376) at 1:1000 dilution.
Secondary antibody: HRP Goat Anti-Rabbit IgG (H+L) (AS014) at 1:10000 dilution.
Lysates/proteins: 25µg per lane.
Blocking buffer: 3% nonfat dry milk in TBST.
Detection: ECL Enhanced Kit (RM00021).
Exposure time: 90s.