

FAM38A/PIEZO1 Rabbit mAb

Catalog No.: A23380 **Recombinant** **2 Publications**

Basic Information

Observed MW

287kDa

Calculated MW

287kDa

Category

Primary antibody

Applications

WB,IHC-P,ELISA

Cross-Reactivity

Human, Mouse, Rat

CloneNo number

ARC60118

Background

The protein encoded by this gene is a mechanically-activated ion channel that links mechanical forces to biological signals. The encoded protein contains 36 transmembrane domains and functions as a homotetramer. Defects in this gene have been associated with dehydrated hereditary stomatocytosis.

Recommended Dilutions

WB 1:500 - 1:1000

IHC-P 1:200 - 1:800

ELISA Recommended starting concentration is 1 µg/mL. Please optimize the concentration based on your specific assay requirements.

Immunogen Information

Gene ID

9780

Swiss Prot

Q92508

Immunogen

Recombinant fusion protein containing a sequence corresponding to amino acids 2199-2429 of human PIEZO1(NP_001136336.2).

Synonyms

ER; DHS; Mib; LMPH3; FAM38A; LMPHM6; FAM38A/PIEZO1

Contact

☎ | 400-999-6126

✉ | cn.market@abclonal.com.cn

🌐 | www.abclonal.com.cn

Product Information

Source

Rabbit

Isotype

IgG

Purification

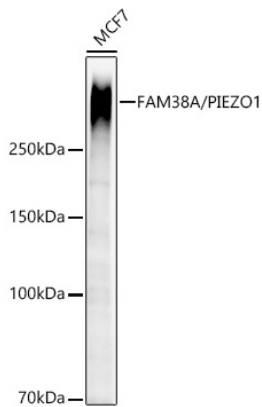
Affinity purification

Storage

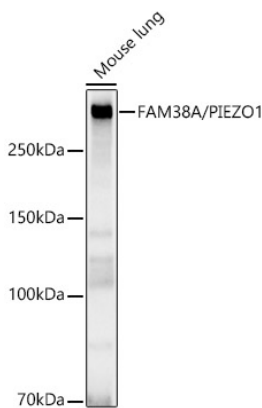
Store at -20°C. Avoid freeze / thaw cycles.

Buffer: PBS with 0.09% Sodium azide,0.05% BSA,50% glycerol,pH7.3.

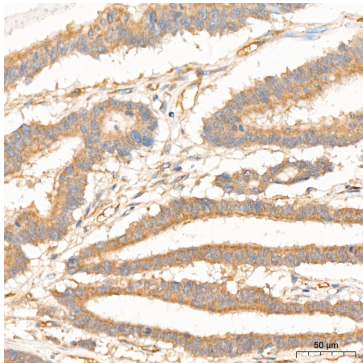
Validation Data



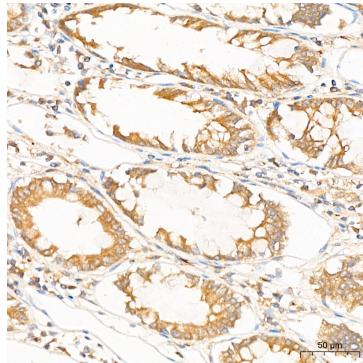
Western blot analysis of lysates from MCF7 cells using FAM38A/PIEZO1 Rabbit mAb (A23380) at 1:1000 dilution incubated overnight at 4°C.
Secondary antibody: HRP-conjugated Goat anti-Rabbit IgG (H+L) (AS014) at 1:10000 dilution.
Lysates/proteins: 25µg per lane.
Blocking buffer: 3% nonfat dry milk in TBST.
Detection: ECL Enhanced Kit (RM00021).
Exposure time: 60s.



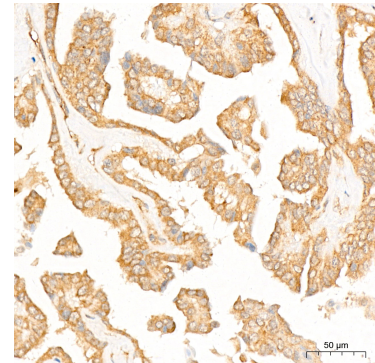
Western blot analysis of lysates from Mouse lung using FAM38A/PIEZO1 Rabbit mAb (A23380) at 1:1000 dilution incubated overnight at 4°C.
Secondary antibody: HRP-conjugated Goat anti-Rabbit IgG (H+L) (AS014) at 1:10000 dilution.
Lysates/proteins: 25µg per lane.
Blocking buffer: 3% nonfat dry milk in TBST.
Detection: ECL Enhanced Kit (RM00021).
Exposure time: 120s.



Immunohistochemistry analysis of paraffin-embedded Human colon carcinoma tissue using FAM38A/PIEZO1 Rabbit mAb (A23380) at a dilution of 1:200 (40x lens). High pressure antigen retrieval performed with 0.01M Citrate Buffer (pH 6.0) prior to IHC staining.



Immunohistochemistry analysis of paraffin-embedded Human colon tissue using FAM38A/PIEZO1 Rabbit mAb (A23380) at a dilution of 1:200 (40x lens). High pressure antigen retrieval performed with 0.01M Citrate Buffer (pH 6.0) prior to IHC staining.



Immunohistochemistry analysis of paraffin-embedded Human thyroid cancer tissue using FAM38A/PIEZO1 Rabbit mAb (A23380) at a dilution of 1:200 (40x lens). High pressure antigen retrieval performed with 0.01M Citrate Buffer (pH 6.0) prior to IHC staining.