

ABflo® 594 Rabbit anti-Human Claudin18.2 mAb

Catalog No.: A23393

Basic Information

Observed MW

Refer to figures

Calculated MW

27kDa

Category

Primary antibody

Applications

FC

Cross-Reactivity

Human

CloneNo number

ARC60744-ABf594

Conjugate

ABflo® 594. Ex:588nm. Em:604nm.

Recommended Dilutions

FC 5 µl per 10⁶ cells in
100 µl volume

Background

This gene encodes a member of the claudin family. Claudins are integral membrane proteins and components of tight junction strands. Tight junction strands serve as a physical barrier to prevent solutes and water from passing freely through the paracellular space between epithelial or endothelial cell sheets, and also play critical roles in maintaining cell polarity and signal transductions. This gene is upregulated in patients with ulcerative colitis and highly overexpressed in infiltrating ductal adenocarcinomas. PKC/MAPK/AP-1 (protein kinase C/mitogen-activated protein kinase/activator protein-1) dependent pathway regulates the expression of this gene in gastric cells. Alternatively spliced transcript variants encoding different isoforms have been identified.

Immunogen Information

Gene ID

51208

Swiss Prot

P56856-2

Immunogen

Recombinant fusion protein containing a sequence corresponding to amino acids 1-261 of human Claudin18.2(NP_001002026.1).

Synonyms

SFTA5; SFTPJ

Contact

☎ | 400-999-6126

✉ | cn.market@abclonal.com.cn

🌐 | www.abclonal.com.cn

Product Information

Source

Rabbit

Isotype

IgG

Purification

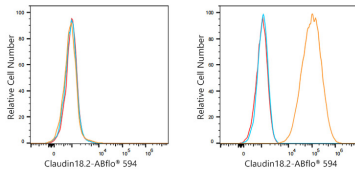
Affinity purification

Storage

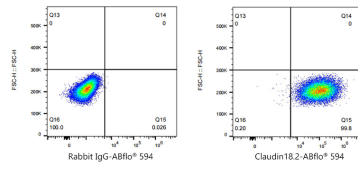
Store at 2-8°C. Avoid freeze.

Buffer: PBS with 0.03% proclin300,0.2% BSA,pH7.3.

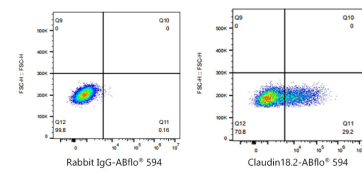
Validation Data



Flow cytometry: 1×10^6 CHO cells (negative control, left) and CHO (Transfection, right) cells were surface-stained with ABflo® 594 Rabbit anti-Human Claudin18.2 mAb (A23393, 5 μ l/Test, orange line) or ABflo® 594 Rabbit IgG isotype control (A23821, 5 μ l/Test, blue line). Non-fluorescently stained cells were used as blank control (red line).



Flow cytometry: 1×10^6 CHO (Transfection) cells were surface-stained with ABflo® 594 Rabbit IgG isotype control (A23821, 5 μ l/Test, left) or ABflo® 594 Rabbit anti-Human Claudin18.2 mAb (A23393, 5 μ l/Test, right).



Flow cytometry: 1×10^6 NUGC4 cells were surface-stained with ABflo® 594 Rabbit IgG isotype control (A23821, 5 μ l/Test, left) or ABflo® 594 Rabbit anti-Human Claudin18.2 mAb (A23393, 5 μ l/Test, right).