

ABflo® 647 Rabbit anti-Human CD16b mAb

Catalog No.: A23402

Basic Information

Observed MW**Calculated MW**

26KDa

Category

Primary antibody

Applications

FC

Cross-Reactivity

Human

CloneNo number

ARC59988-ABf647

Conjugate

ABflo® 647. Ex:648nm. Em:664nm.

Recommended Dilutions

FC	5 µl per 10 ⁶ cells in 100 µl volume
-----------	--

Background

This gene encodes a receptor for the Fc portion of immunoglobulin G, and it is involved in the removal of antigen-antibody complexes from the circulation, as well as other responses, including antibody dependent cellular mediated cytotoxicity and antibody dependent enhancement of virus infections. This gene (FCGR3A) is highly similar to another nearby gene (FCGR3B) located on chromosome 1. The receptor encoded by this gene is expressed on natural killer (NK) cells as an integral membrane glycoprotein anchored through a transmembrane peptide, whereas FCGR3B is expressed on polymorphonuclear neutrophils (PMN) where the receptor is anchored through a phosphatidylinositol (PI) linkage. Mutations in this gene are associated with immunodeficiency 20, and have been linked to susceptibility to recurrent viral infections, susceptibility to systemic lupus erythematosus, and alloimmune neonatal neutropenia. Alternatively spliced transcript variants encoding different isoforms have been found for this gene.

Immunogen Information

Gene ID

2215

Swiss Prot

O75015

Immunogen

Recombinant fusion protein containing a sequence corresponding to amino acids 20-208 of human CD16b (NP_000561.3).

Synonyms

CD16; CD16-I; CD16b; FCG3; FCGR3; FCGR3B; FCR-10; FCRIII; FCRIIIb

Contact

		400-999-6126
--	--	--------------

		cn.market@abclonal.com.cn
--	--	---------------------------

		www.abclonal.com.cn
--	--	--

Product Information

Source

Rabbit

Isotype

IgG

Purification

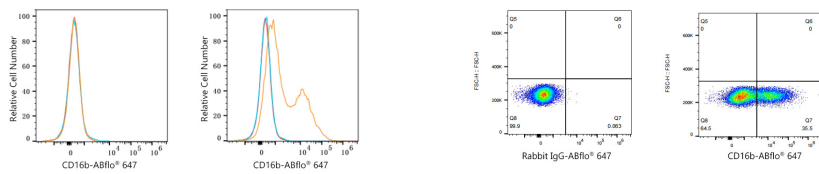
Affinity purification

Storage

Store at 2-8°C. Avoid freeze.

Buffer: PBS with 0.03% proclin300,0.2% BSA,pH7.3.

Validation Data



Flow cytometry: 1×10^6 293F cells (negative control, left) and 293F (Transfection, right) cells were surface-stained with ABflo® 647 Rabbit anti-Human CD16b mAb (A23402, 5 μ l/Test, orange line) or ABflo® 647 Rabbit IgG isotype control (A22070, 5 μ l/Test, blue line). Non-fluorescently stained cells were used as blank control (red line).

Flow cytometry: 1×10^6 293F (Transfection) cells were surface-stained with ABflo® 647 Rabbit IgG isotype control (A22070, 5 μ l/Test, left) or ABflo® 647 Rabbit anti-Human CD16b mAb (A23402, 5 μ l/Test, right).