

# ABflo® 647 Rabbit anti-Monkey IgD mAb

Catalog No.: A23404

## Basic Information

---

**Observed MW**

**Calculated MW**

**Category**

Primary antibody

**Applications**

FC

**Cross-Reactivity**

Cynomolgus monkey

**CloneNo number**

ARC60233-ABf647

**Conjugate**

ABflo® 647. Ex:648nm. Em:664nm.

## Background

---

## Recommended Dilutions

---

**FC** 5 µl per 10<sup>6</sup> cells in  
100 µl volume

## Immunogen Information

---

**Gene ID**

**Swiss Prot**

**Immunogen**

Recombinant protein of cynomolgus monkey immunoglobulin delta heavy chain.

**Synonyms**

## Contact

---

 | 400-999-6126

 | [cn.market@abclonal.com.cn](mailto:cn.market@abclonal.com.cn)

 | [www.abclonal.com.cn](http://www.abclonal.com.cn)

## Product Information

---

**Source**

Rabbit

**Isotype**

IgG

**Purification**

Affinity purification

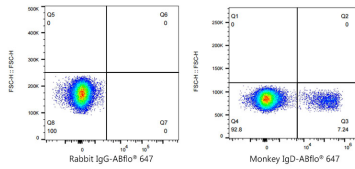
**Storage**

Store at 2-8°C. Avoid freeze.

Buffer: PBS with 0.03% proclin300,0.2% BSA,pH7.3.

## Validation Data

---



Flow cytometry:  $1 \times 10^6$  Monkey PBMC cells were surface-stained with ABflo® 647 Rabbit IgG isotype control (A22070, 5  $\mu$ l/Test, left) or ABflo® 647 Rabbit anti-Monkey IgD mAb (A23404, 5  $\mu$ l/Test, right).