

# ABflo® 647 Rabbit anti-Human CD28 mAb

Catalog No.: A23406

## Basic Information

### Observed MW

Refer to figures

### Calculated MW

25kDa

### Category

Primary antibody

### Applications

FC

### Cross-Reactivity

Human

### CloneNo number

ARC5082-01-ABf647

### Conjugate

ABflo® 647. Ex:648nm. Em:664nm.

## Recommended Dilutions

**FC** 5 µl per 10<sup>6</sup> cells in  
100 µl volume

## Background

The protein encoded by this gene is essential for T-cell proliferation and survival, cytokine production, and T-helper type-2 development. Several alternatively spliced transcript variants encoding different isoforms have been found for this gene.

## Immunogen Information

**Gene ID**  
940

**Swiss Prot**  
P10747

### Immunogen

Recombinant protein of human CD28 Full length [P10747]


### Synonyms

Tp44

## Contact

 | 400-999-6126

 | [cn.market@abclonal.com.cn](mailto:cn.market@abclonal.com.cn)

 | [www.abclonal.com.cn](http://www.abclonal.com.cn)

## Product Information

### Source

Rabbit

### Isotype

IgG

### Purification

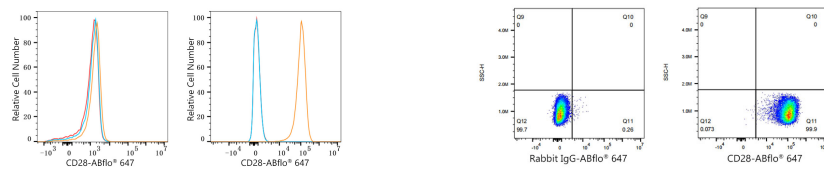
Affinity purification

### Storage

Store at 2-8°C. Avoid freeze.

Buffer: PBS with 0.03% proclin300,0.2% BSA,pH7.3.

## Validation Data



Flow cytometry:  $1 \times 10^6$  K-562 cells (negative control, left) and U266 cells (right) were surface-stained with ABflo® 647 Rabbit anti-Human CD28 mAb (A23406, 5  $\mu$ l/Test, orange line) or ABflo® 647 Rabbit IgG isotype control (A22070, 5  $\mu$ l/Test, blue line). Non-fluorescently stained cells were used as blank control (red line).

Flow cytometry:  $1 \times 10^6$  U266 cells were surface-stained with ABflo® 647 Rabbit IgG isotype control (A22070, 5  $\mu$ l/Test, left) or ABflo® 647 Rabbit anti-Human CD28 mAb (A23406, 5  $\mu$ l/Test, right).