

Arsk Rabbit pAb

Catalog No.: A23409

Basic Information

Observed MW

68kDa

Calculated MW

63kDa

Category

Primary antibody

Applications

ELISA, WB

Cross-Reactivity

Human

Background

Enables glucuronate-2-sulfatase activity. Predicted to be located in extracellular region and lysosome. Is expressed in aorta; genitourinary system; heart; and spinal cord. Used to study mucopolysaccharidosis. Orthologous to human ARSK (arylsulfatase family member K).

Recommended Dilutions

WB 1:500 - 1:1000

Immunogen Information

Gene ID

77041

Swiss Prot

Q9D2L1

Immunogen

Recombinant fusion protein containing a sequence corresponding to amino acids 18-553 of human Arsk(NP_084123.3).

Synonyms

ASK; 2810429K17Rik; 4833414G15Rik; Arsk

Contact

☎ | 400-999-6126

✉ | cn.market@abclonal.com.cn

🌐 | www.abclonal.com.cn

Product Information

Source

Rabbit

Isotype

IgG

Purification

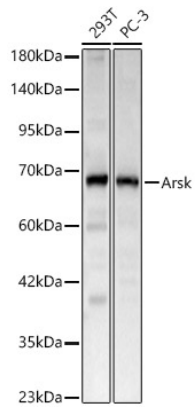
Affinity purification

Storage

Store at -20°C. Avoid freeze / thaw cycles.

Buffer: PBS with 0.05% proclin300, 50% glycerol, pH7.3.

Validation Data



Western blot analysis of various lysates, using Arsk Rabbit pAb (A23409) at 1:1000 dilution.
Secondary antibody: HRP-conjugated Goat anti-Rabbit IgG (H+L) (AS014) at 1:10000 dilution.
Lysates/proteins: 25µg per lane.
Blocking buffer: 3% nonfat dry milk in TBST.
Detection: ECL Basic Kit (RM00020).
Exposure time: 20s.