

R9AP/RGS9BP Rabbit mAb

Catalog No.: A23413 **Recombinant**

Basic Information

Observed MW

30kDa

Calculated MW

25kDa

Category

Primary antibody

Applications

ELISA, WB, IF/ICC

Cross-Reactivity

Human

CloneNo number

ARC61024

Background

The protein encoded by this gene functions as a regulator of G protein-coupled receptor signaling in phototransduction. Studies in bovine and mouse show that this gene is expressed only in the retina, and is localized in the rod outer segment membranes. This protein is associated with a heterotetrameric complex, specifically interacting with the regulator of G-protein signaling 9, and appears to function as the membrane anchor for the other largely soluble interacting partners. Mutations in this gene are associated with prolonged electroretinal response suppression (PERRS), also known as bradyopsia.

Recommended Dilutions

WB	1:500 - 1:1000
IF/ICC	1:50 - 1:200

Immunogen Information

Gene ID

388531

Swiss Prot

Q6ZS82

Immunogen

Recombinant fusion protein containing a sequence corresponding to amino acids 1-107 of human R9AP/RGS9BP. (NP_997274.2).

Synonyms

R9AP; RGS9; PERRS; R9AP/RGS9BP

Contact

 | 400-999-6126

 | cn.market@abclonal.com.cn

 | www.abclonal.com.cn

Product Information

Source

Rabbit

Isotype

IgG

Purification

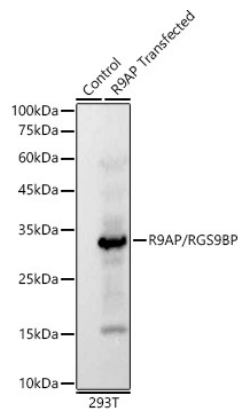
Affinity purification

Storage

Store at -20°C. Avoid freeze / thaw cycles.

Buffer: PBS with 0.05% proclin300, 0.05% BSA, 50% glycerol, pH7.3.

Validation Data



Western blot analysis of extracts from wild type (WT) and 293T cells transfected with R9AP/RGS9BP using R9AP/RGS9BP Rabbit mAb (A23413) at 1:1000 dilution.

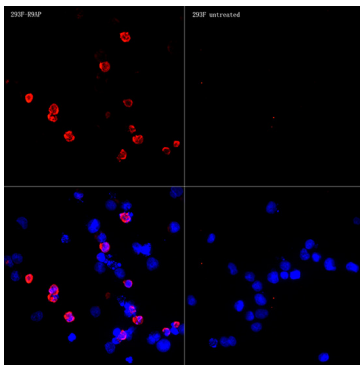
Secondary antibody: HRP Goat Anti-Rabbit IgG (H+L) (AS014) at 1:10000 dilution.

Lysates/proteins: 25µg per lane.

Blocking buffer: 3% nonfat dry milk in TBST.

Detection: ECL Basic Kit (RM00020).

Exposure time: 1s.



Immunofluorescence analysis of R9AP-293F transfected and control 293F cells using R9AP/RGS9BP Rabbit mAb (A23413) at dilution of 1:100 (40x lens). Blue: DAPI for nuclear staining.