

SMPD3/NSMase2 Rabbit mAb

Catalog No.: A23417 **Recombinant**

Basic Information

Observed MW

71kDa

Calculated MW

71kDa

Category

Primary antibody

Applications

ELISA, WB, IHC-P

Cross-Reactivity

Human, Mouse, Rat

CloneNo number

ARC60887

Background

Predicted to enable phosphatidic acid binding activity; phosphatidylserine binding activity; and sphingomyelin phosphodiesterase activity. Predicted to be involved in positive regulation of exosomal secretion and sphingomyelin metabolic process. Predicted to act upstream of or within several processes, including animal organ development; enzyme linked receptor protein signaling pathway; and sphingolipid metabolic process. Predicted to be located in Golgi apparatus and plasma membrane. Predicted to be active in cytoplasm. Biomarker of pulmonary emphysema.

Recommended Dilutions

WB 1:1000 - 1:5000

IHC-P 1:50 - 1:200

Immunogen Information

Gene ID

55512

Swiss Prot

Q9NY59

Immunogen

Recombinant fusion protein containing a sequence corresponding to amino acids 461-655 of human SMPD3/NSMase2 (NP_061137.1).

Synonyms

NSMASE2; SMPD3/NSMase2

Contact

☎ | 400-999-6126

✉ | cn.market@abclonal.com.cn

🌐 | www.abclonal.com.cn

Product Information

Source

Rabbit

Isotype

IgG

Purification

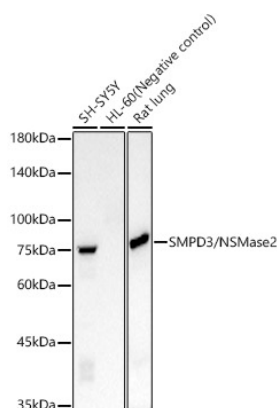
Affinity purification

Storage

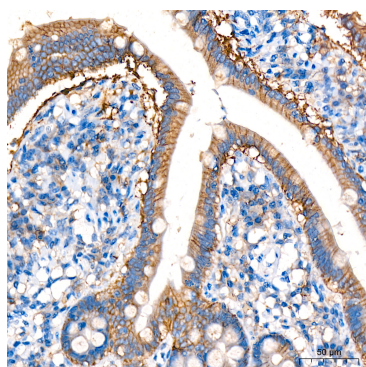
Store at -20°C. Avoid freeze / thaw cycles.

Buffer: PBS with 0.05% proclin300, 0.05% BSA, 50% glycerol, pH7.3.

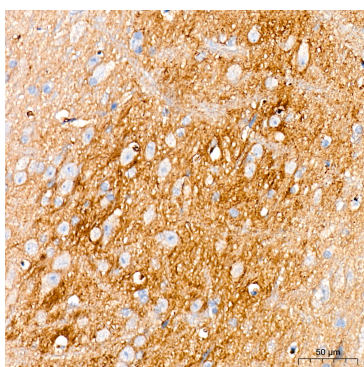
Validation Data



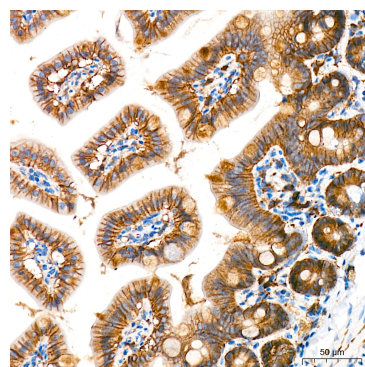
Western blot analysis of various lysates, using SMPD3/NSMase2 Rabbit mAb (A23417) at 1:2000 dilution.
 Secondary antibody: HRP Goat Anti-Rabbit IgG (H+L) (AS014) at 1:10000 dilution.
 Lysates/proteins: 25µg per lane.
 Blocking buffer: 3% nonfat dry milk in TBST.
 Detection: ECL Basic Kit (RM00020).
 Exposure time: 5s.



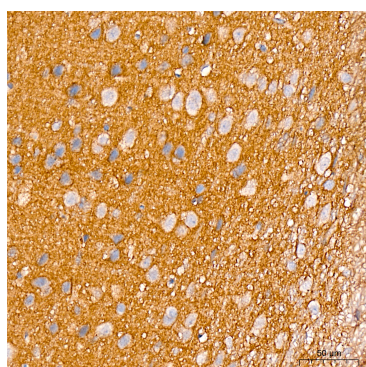
Immunohistochemistry analysis of SMPD3/NSMase2 in paraffin-embedded human small intestine tissue using SMPD3/NSMase2 Rabbit mAb (A23417) at a dilution of 1:200 (40x lens). High pressure antigen retrieval was performed with 0.01 M citrate buffer (pH 6.0) prior to IHC staining.



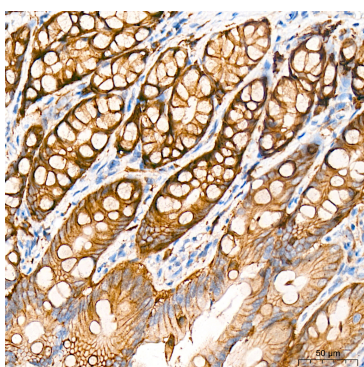
Immunohistochemistry analysis of SMPD3/NSMase2 in paraffin-embedded mouse brain tissue using SMPD3/NSMase2 Rabbit mAb (A23417) at a dilution of 1:200 (40x lens). High pressure antigen retrieval was performed with 0.01 M citrate buffer (pH 6.0) prior to IHC staining.



Immunohistochemistry analysis of SMPD3/NSMase2 in paraffin-embedded mouse intestine tissue using SMPD3/NSMase2 Rabbit mAb (A23417) at a dilution of 1:200 (40x lens). High pressure antigen retrieval was performed with 0.01 M citrate buffer (pH 6.0) prior to IHC staining.



Immunohistochemistry analysis of SMPD3/NSMase2 in paraffin-embedded rat brain tissue using SMPD3/NSMase2 Rabbit mAb (A23417) at a dilution of 1:200 (40x lens). High pressure antigen retrieval was performed with 0.01 M citrate buffer (pH 6.0) prior to IHC staining.



Immunohistochemistry analysis of SMPD3/NSMase2 in paraffin-embedded rat colon tissue using SMPD3/NSMase2 Rabbit mAb (A23417) at a dilution of 1:200 (40x lens). High pressure antigen retrieval was performed with 0.01 M citrate buffer (pH 6.0) prior to IHC staining.