

EGR1 Rabbit mAb

Catalog No.: A23424 **Recombinant** **3 Publications**

Basic Information

Observed MW

75-80kDa/

Calculated MW

58kDa

Category

Primary antibody

Applications

WB,IP,IF-P,IHC-P,ELISA

Cross-Reactivity

Human, Mouse, Rat

CloneNo number

ARC60244

Background

The protein encoded by this gene belongs to the EGR family of C2H2-type zinc-finger proteins. It is a nuclear protein and functions as a transcriptional regulator. The products of target genes it activates are required for differentiation and mitogenesis. Studies suggest this is a cancer suppressor gene.

Recommended Dilutions

WB 1:5000 - 1:20000

IP 0.5µg-4µg antibody for
200µg-400µg extracts of
whole cells

IF-P 1:200 - 1:800

IHC-P 1:200-1:800

ELISA Recommended starting
concentration is 1 µg/mL.
Please optimize the
concentration based on
your specific assay
requirements.

Immunogen Information

Gene ID

1958

Swiss Prot

P18146

Immunogen

Recombinant protein (or fragment). This information is considered to be commercially sensitive.

Synonyms

TIS8; AT225; G0S30; NGFI-A; ZNF225; KROX-24; ZIF-268; EGR1

Product Information

Source

Rabbit

Isotype

IgG

Purification

Affinity purification

Storage

Store at -20°C. Avoid freeze / thaw cycles.

Buffer: PBS containing 50% glycerol and 0.05% BSA, preserved with proclin300 or sodium azide (as specified on the Certificate of Analysis), pH 7.3.

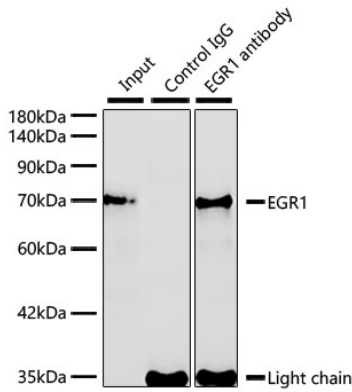
Contact

☎ | 400-999-6126

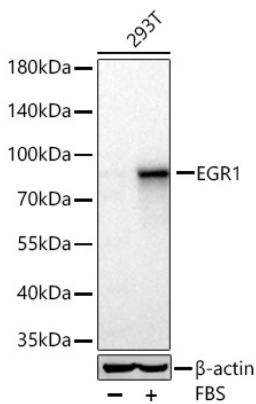
✉ | cn.market@abclonal.com.cn

🌐 | www.abclonal.com.cn

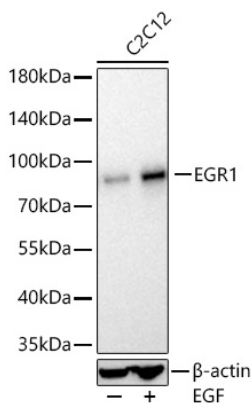
Validation Data



Immunoprecipitation of EGR1 from 300 µg extracts of 293T cells treated with 20%FBS was performed using 3 µg of EGR1 Rabbit mAb (A23424). Rabbit IgG isotype control (AC042) was used to precipitate the Control IgG sample. IP samples were eluted with 1X reducing Laemmli Buffer. The Input lane represents 10% of the total input. Western blot analysis of immunoprecipitates was conducted using EGR1 Rabbit mAb (A23424) at a dilution of 1:2000.

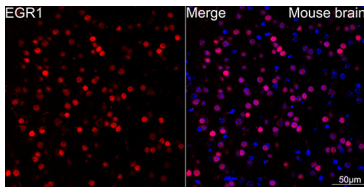


Western blot analysis of lysates from 293T cells using EGR1 Rabbit mAb (A23424) at 1:5000 dilution incubated at room temperature for 1.5 hours. 293T cells were treated with 20% FBS at 37°C for 30 minutes after serum-starvation overnight. Secondary antibody: HRP-conjugated Goat anti-Rabbit IgG (H+L) (AS014) at 1:10000 dilution. Lysates/proteins: 30 µg per lane. Blocking buffer: 3 % nonfat dry milk in TBST. Detection: ECL Basic Kit (RM00020). Exposure time: 1s.

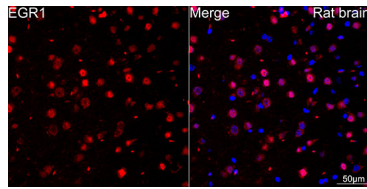


Western blot analysis of lysates from C2C12 cells using EGR1 Rabbit mAb (A23424) at 1:5000 dilution incubated at room temperature for 1.5 hours. C2C12 cells were treated with EGF (100 ng/ml) at 37°C for 30 minutes after serum-starvation overnight. Secondary antibody: HRP-conjugated Goat anti-Rabbit IgG (H+L) (AS014) at 1:10000 dilution. Lysates/proteins: 30 µg per lane. Blocking buffer: 3 % nonfat dry milk in TBST. Detection: ECL Basic Kit (RM00020). Exposure time: 1s.

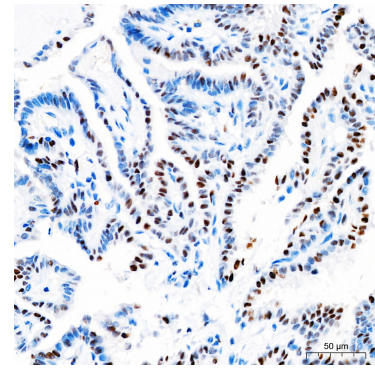
Validation Data



Confocal imaging of paraffin-embedded Mouse brain tissue using EGR1 Rabbit mAb (A23424, dilution 1:200) followed by a further incubation with Cy3 Goat Anti-Rabbit IgG (H+L) (AS007, dilution 1:500) (Red). DAPI was used for nuclear staining (Blue). Microwave antigen retrieval performed with 0.01M Citrate Buffer (pH 6.0) prior to IF staining. Objective: 40x.



Confocal imaging of paraffin-embedded Rat brain tissue using EGR1 Rabbit mAb (A23424, dilution 1:200) followed by a further incubation with Cy3 Goat Anti-Rabbit IgG (H+L) (AS007, dilution 1:500) (Red). DAPI was used for nuclear staining (Blue). Microwave antigen retrieval performed with 0.01M Citrate Buffer (pH 6.0) prior to IF staining. Objective: 40x.



Immunohistochemistry analysis of paraffin-embedded Human thyroid cancer tissue using EGR1 Rabbit mAb (A23424) at a dilution of 1:200 (40x lens). High pressure antigen retrieval performed with 0.01M Citrate buffer (pH 6.0) prior to IHC staining.