

# Integrin $\beta$ 5/ITGB5 Rabbit mAb

Catalog No.: A23428 **Recombinant**

## Basic Information

### Observed MW

100kDa

### Calculated MW

88kDa

### Category

Primary antibody

### Applications

WB,(ELISA)

### Cross-Reactivity

Human

### CloneNo number

ARC60869

## Background

This gene encodes a beta subunit of integrin, which can combine with different alpha chains to form a variety of integrin heterodimers. Integrins are integral cell-surface receptors that participate in cell adhesion as well as cell-surface mediated signaling. The alpha $\beta$ 5 integrin is involved in adhesion to vitronectin.

## Recommended Dilutions

**WB** 1:500 - 1:1000

**ELISA** Recommended starting concentration is 1  $\mu$ g/mL. Please optimize the concentration based on your specific assay requirements.

## Immunogen Information

### Gene ID

3693

### Swiss Prot

P18084

### Immunogen

Recombinant fusion protein containing a sequence corresponding to amino acids 24-490 of human Integrin  $\beta$ 5/ITGB5. (NP\_002204.2).

### Synonyms

ITGB5; integrin beta-5; Integrin  $\beta$ 5/ITGB5

## Contact

☎ | 400-999-6126

✉ | [cn.market@abclonal.com.cn](mailto:cn.market@abclonal.com.cn)

🌐 | [www.abclonal.com.cn](http://www.abclonal.com.cn)

## Product Information

### Source

Rabbit

### Isotype

IgG

### Purification

Affinity purification

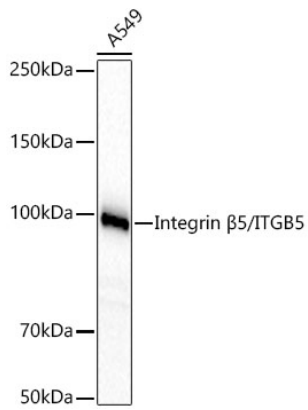
### Storage

Store at -20°C. Avoid freeze / thaw cycles.

Buffer: PBS with 0.05% proclin300,0.05% BSA,50% glycerol,pH7.3.

## Validation Data

---



Western blot analysis of lysates from A549 cells, using Integrin  $\beta$ 5/ITGB5 Rabbit mAb (A23428) at 1:1000 dilution.

Secondary antibody: HRP-conjugated Goat anti-Rabbit IgG (H+L) (AS014) at 1:10000 dilution.

Lysates/proteins: 25 $\mu$ g per lane.

Blocking buffer: 3% nonfat dry milk in TBST.

Detection: ECL Basic Kit (RM00020).

Exposure time: 30s.