

[KD Validated] beta 2 Microglobulin Rabbit mAb

Catalog No.: A23430 **Recombinant**

Basic Information

Observed MW

12kDa

Calculated MW

13kDa

Category

Primary antibody

Applications

ELISA,WB,IF/ICC,FC

Cross-Reactivity

Human

CloneNo number

ARC60950

Background

This gene encodes a serum protein found in association with the major histocompatibility complex (MHC) class I heavy chain on the surface of nearly all nucleated cells. The protein has a predominantly beta-pleated sheet structure that can form amyloid fibrils in some pathological conditions. The encoded antimicrobial protein displays antibacterial activity in amniotic fluid. A mutation in this gene has been shown to result in hypercatabolic hypoproteinemia.

Recommended Dilutions

WB	1:500 - 1:1000
IF/ICC	1:50 - 1:200
FC	1:500 - 1:1000

Immunogen Information

Gene ID

567

Swiss Prot

P61769

Immunogen

Recombinant fusion protein containing a sequence corresponding to amino acids 21-119 of human β 2 Microglobulin(NP_004039.1).

Synonyms

B2M; IMD43; beta-2-microglobulin; [KD Validated] beta 2 Microglobulin

Contact

☎ | 400-999-6126

✉ | cn.market@abclonal.com.cn

🌐 | www.abclonal.com.cn

Product Information

Source

Rabbit

Isotype

IgG

Purification

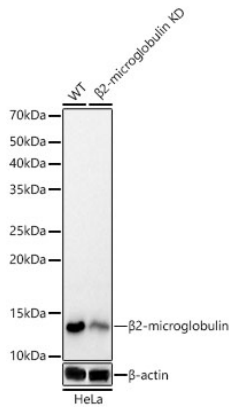
Affinity purification

Storage

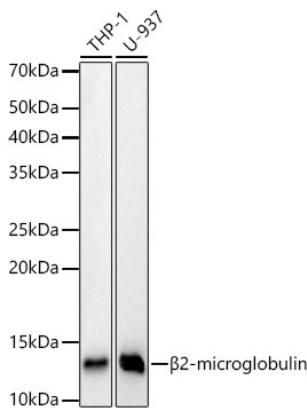
Store at -20°C. Avoid freeze / thaw cycles.

Buffer: PBS with 0.05% proclin300,0.05% BSA,50% glycerol,pH7.3.

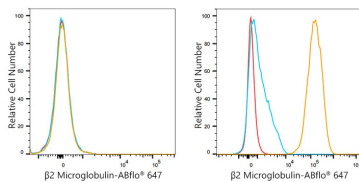
Validation Data



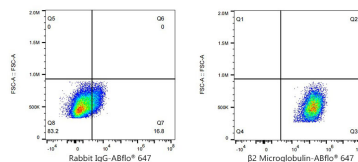
Western blot analysis of lysates from wild type (WT) and β 2-microglobulin knockdown (KD) HeLa cells, using [KD Validated] beta 2 Microglobulin Rabbit mAb (A23430) at 1:1000 dilution. Secondary antibody: HRP Goat Anti-Rabbit IgG (H+L) (AS014) at 1:10000 dilution. Lysates/proteins: 25 μ g per lane. Blocking buffer: 3% nonfat dry milk in TBST. Detection: ECL Basic Kit (RM00020). Exposure time: 30s.



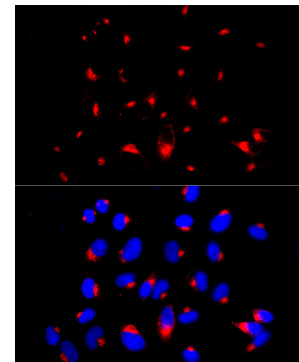
Western blot analysis of various lysates, using [KD Validated] beta 2 Microglobulin Rabbit mAb (A23430) at 1:1000 dilution. Secondary antibody: HRP Goat Anti-Rabbit IgG (H+L) (AS014) at 1:10000 dilution. Lysates/proteins: 25 μ g per lane. Blocking buffer: 3% nonfat dry milk in TBST. Detection: ECL Basic Kit (RM00020). Exposure time: 30s.



Flow cytometry: 1×10^6 Daudi cells (negative control, left) and HeLa cells (right) were surface-stained with [KD Validated] beta 2 Microglobulin Rabbit mAb (A23430, 2 μ g/mL, orange line) or ABflo® 647 Rabbit IgG isotype control (A22070, 2 μ g/mL, blue line). Non-fluorescently stained cells were used as blank control (red line).



Flow cytometry: 1×10^6 HeLa cells were surface-stained with ABflo® 647 Rabbit IgG isotype control (A22070, 2 μ g/mL, left) or β 2 Microglobulin Rabbit mAb (A23430, 2 μ g/mL, right).



Immunofluorescence analysis of HeLa cells using [KD Validated] beta 2 Microglobulin Rabbit mAb (A23430) at dilution of 1:100 (40x lens). Secondary antibody: Cy3 Goat Anti-Rabbit IgG (H+L) (AS007) at 1:500 dilution. Blue: DAPI for nuclear staining.