

USP25 Rabbit mAb

Catalog No.: A23431 **Recombinant** **4 Publications**

Basic Information

Observed MW

130kDa/130KD

Calculated MW

122KDa/125KDa/129KDa

Category

Primary antibody

Applications

WB,IP,IHC-P,ELISA

Cross-Reactivity

Human, Mouse, Rat

CloneNo number

ARC60125

Background

Ubiquitin (MIM 191339) is a highly conserved 76-amino acid protein involved in regulation of intracellular protein breakdown, cell cycle regulation, and stress response. Ubiquitin is released from degraded proteins by disassembly of the polyubiquitin chains, which is mediated by ubiquitin-specific proteases (USPs), such as USP25 (Valero et al., 1999 [PubMed 10644437]).

Recommended Dilutions

WB	1:2000 - 1:60000
IP	0.5µg-4µg antibody for 200µg-400µg extracts of whole cells
IHC-P	1:50 - 1:20
ELISA	Recommended starting concentration is 1 µg/mL. Please optimize the concentration based on your specific assay requirements.

Contact

☎ | 400-999-6126

✉ | cn.market@abclonal.com.cn

🌐 | www.abclonal.com.cn

Immunogen Information

Gene ID

29761

Swiss Prot

Q9UHP3

Immunogen

Recombinant protein (or fragment). This information is considered to be commercially sensitive.

Synonyms

USP21; USP25

Product Information

Source

Rabbit

Isotype

IgG

Purification

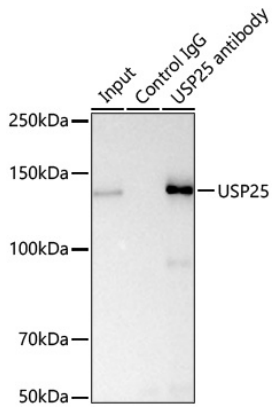
Affinity purification

Storage

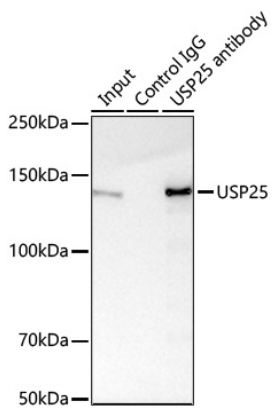
Store at -20°C. Avoid freeze / thaw cycles.

Buffer: PBS containing 50% glycerol and 0.05% BSA, preserved with proclin300 or sodium azide (as specified on the Certificate of Analysis), pH 7.3.

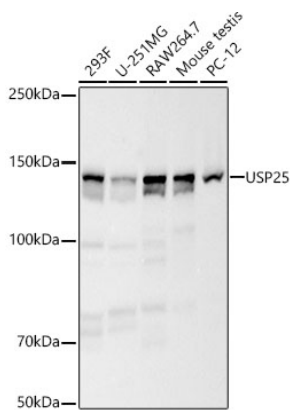
Validation Data



Immunoprecipitation of USP25 from 300 µg extracts of 293F cells was performed using 0.5 µg of USP25 Rabbit mAb (A23431). Rabbit IgG isotype control (AC005) was used to precipitate the Control IgG sample. IP samples were eluted with 1X reducing Laemmli Buffer. The Input lane represents 10% of the total input. Western blot analysis of immunoprecipitates was conducted using USP25 Rabbit mAb (A23431) at a dilution of 1:5000.

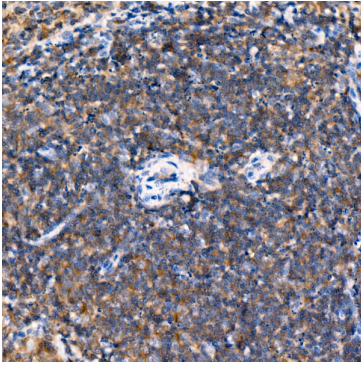


Immunoprecipitation of USP25 from 300 µg extracts of Mouse testis was performed using 0.5 µg of USP25 Rabbit mAb (A23431). Rabbit IgG isotype control (AC005) was used to precipitate the Control IgG sample. IP samples were eluted with 1X reducing Laemmli Buffer. The Input lane represents 10% of the total input. Western blot analysis of immunoprecipitates was conducted using USP25 Rabbit mAb (A23431) at a dilution of 1:5000.

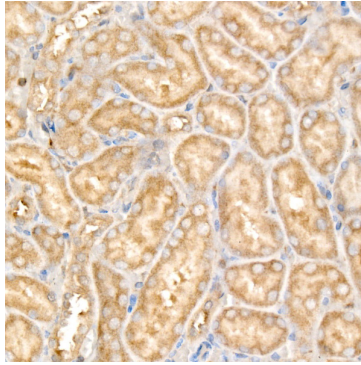


Western blot analysis of various lysates, using USP25 Rabbit mAb (A23431) at 1:5000 dilution. Secondary antibody: HRP-conjugated Goat anti-Rabbit IgG (H+L) (AS014) at 1:10000 dilution. Lysates/proteins: 25µg per lane. Blocking buffer: 3% nonfat dry milk in TBST. Detection: ECL Basic Kit (RM00020). Exposure time: 60s.

Validation Data



Immunohistochemistry analysis of paraffin-embedded Mouse spleen using USP25 Rabbit mAb (A23431) at dilution of 1:100 (40x lens). High pressure antigen retrieval performed with 0.01M Citrate buffer (pH 6.0) prior to IHC staining.



Immunohistochemistry analysis of paraffin-embedded Rat kidney using USP25 Rabbit mAb (A23431) at dilution of 1:100 (40x lens). High pressure antigen retrieval performed with 0.01M Citrate buffer (pH 6.0) prior to IHC staining.