

RPGR Rabbit mAb

Catalog No.: A23433 **Recombinant**

Basic Information

Observed MW

113kDa

Calculated MW

52kDa/70kDa/83kDa/90kDa/113kDa/127kDa

Category

Primary antibody

Applications

WB, IF/ICC, IF-P, ELISA

Cross-Reactivity

Human, Mouse, Rat

CloneNo number

ARC59712

Background

This gene encodes a protein with a series of six RCC1-like domains (RLDs), characteristic of the highly conserved guanine nucleotide exchange factors. The encoded protein is found in the Golgi body and interacts with RPGRIP1. This protein localizes to the outer segment of rod photoreceptors and is essential for their viability. Mutations in this gene have been associated with X-linked retinitis pigmentosa (XLRP). Multiple alternatively spliced transcript variants that encode different isoforms of this gene have been reported, but the full-length natures of only some have been determined.

Recommended Dilutions

WB 1:1000 - 1:6000**IF/ICC** 1:50 - 1:200**IF-P** 1:50 - 1:200

ELISA Recommended starting concentration is 1 µg/mL. Please optimize the concentration based on your specific assay requirements.

Immunogen Information

Gene ID

6103

Swiss Prot

Q92834-6

Immunogen

Recombinant protein (or fragment). This information is considered to be commercially sensitive.

Synonyms

CRD; RP3; COD1; PCDX; RP15; XLRP3; orf15; CORDX1; RPGR

Contact

 | 400-999-6126 | cn.market@abclonal.com.cn | www.abclonal.com.cn

Product Information

Source

Rabbit

Isotype

IgG

Purification

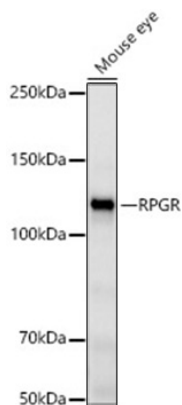
Affinity purification

Storage

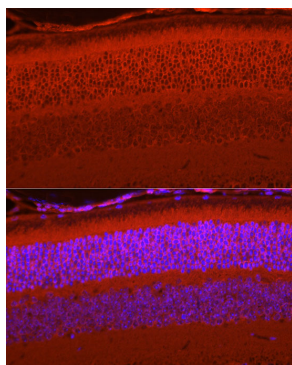
Store at -20°C. Avoid freeze / thaw cycles.

Buffer: PBS containing 50% glycerol and 0.05% BSA, preserved with proclin300 or sodium azide (as specified on the Certificate of Analysis), pH 7.3.

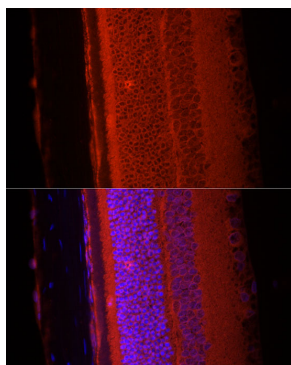
Validation Data



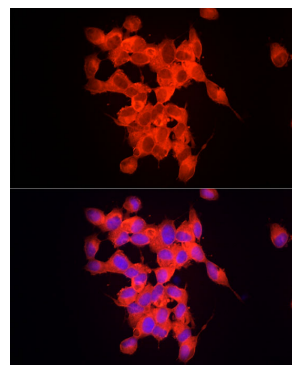
Western blot analysis of various lysates, using RPGR Rabbit mAb (A23433) at 1:6000 dilution. Secondary antibody: HRP-conjugated Goat anti-Rabbit IgG (H+L) (AS014) at 1:10000 dilution. Lysates/proteins: 25 µg per lane. Blocking buffer: 3% nonfat dry milk in TBST. Detection: ECL Basic Kit (RM00020). Exposure time: 180 s.



Immunofluorescence analysis of paraffin-embedded Mouse eye tissue using RPGR Rabbit mAb (A23433) at dilution of 1:100 (40x lens). Secondary antibody: Cy3-conjugated Goat anti-Rabbit IgG (H+L) (AS007) at 1:500 dilution. Blue: DAPI for nuclear staining. Perform microwave antigen retrieval with 10 mM citrate buffer pH 6.0 before commencing with IF staining protocol.



Immunofluorescence analysis of paraffin-embedded Rat eye tissue using RPGR Rabbit mAb (A23433) at dilution of 1:100 (40x lens). Secondary antibody: Cy3-conjugated Goat anti-Rabbit IgG (H+L) (AS007) at 1:500 dilution. Blue: DAPI for nuclear staining. Perform microwave antigen retrieval with 10 mM citrate buffer pH 6.0 before commencing with IF staining protocol.



Immunofluorescence analysis of SH-SY5Y cells using RPGR Rabbit mAb (A23433) at dilution of 1:100 (40x lens). Secondary antibody: Cy3-conjugated Goat anti-Rabbit IgG (H+L) (AS007) at 1:500 dilution. Blue: DAPI for nuclear staining.