

TRAP1 Rabbit mAb

Catalog No.: A23462 **Recombinant**

Basic Information

Observed MW

75kDa

Calculated MW

80kDa

Category

Primary antibody

Applications

ELISA, WB, IP

Cross-Reactivity

Human

CloneNo number

ARC2650

Background

This gene encodes a mitochondrial chaperone protein that is member of the heat shock protein 90 (HSP90) family. The encoded protein has ATPase activity and interacts with tumor necrosis factor type I. This protein may function in regulating cellular stress responses. Alternate splicing results in multiple transcript variants.

Recommended Dilutions

WB 1:500 - 1:1000

IP 0.5µg-4µg antibody for
200µg-400µg extracts of
whole cells

Immunogen Information

Gene ID

10131

Swiss Prot

Q12931

Immunogen

Recombinant fusion protein containing a sequence corresponding to amino acids 580-680 of human TRAP1 (NP_057376.2).

Synonyms

HSP75; HSP 75; HSP90L; TRAP-1; TRAP1

Contact

☎ | 400-999-6126

✉ | cn.market@abclonal.com.cn

🌐 | www.abclonal.com.cn

Product Information

Source

Rabbit

Isotype

IgG

Purification

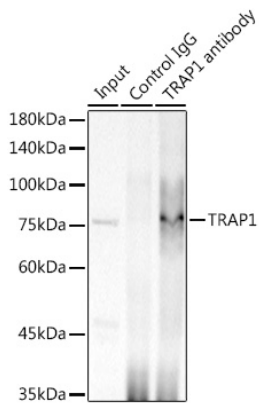
Affinity purification

Storage

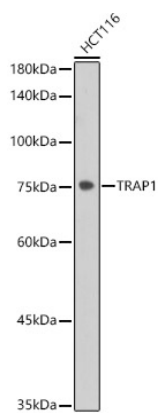
Store at -20°C. Avoid freeze / thaw cycles.

Buffer: PBS with 0.05% proclin300, 0.05% BSA, 50% glycerol, pH7.3.

Validation Data



Immunoprecipitation analysis of 300 μ g extracts of HCT116 cells using 3 μ g TRAP1 antibody (A23462). Western blot was performed from the immunoprecipitate using TRAP1 antibody (A23462) at a dilution of 1:500.



Western blot analysis of lysates from HCT116 cells, using TRAP1 Rabbit mAb (A23462) at 1:1000 dilution. Secondary antibody: HRP-conjugated Goat anti-Rabbit IgG (H+L) (AS014) at 1:10000 dilution. Lysates/proteins: 25 μ g per lane. Blocking buffer: 3% nonfat dry milk in TBST. Detection: ECL Basic Kit (RM00020). Exposure time: 180s.