

# Cytokeratin 17 (KRT17) Rabbit mAb

Catalog No.: A23464 **Recombinant**

## Basic Information

### Observed MW

Refer to figures

### Calculated MW

48kDa

### Category

Primary antibody

### Applications

WB,IF/ICC,ELISA

### Cross-Reactivity

Human, Mouse

### CloneNo number

ARC58245

## Background

This gene encodes the type I intermediate filament chain keratin 17, expressed in nail bed, hair follicle, sebaceous glands, and other epidermal appendages. Mutations in this gene lead to Jackson-Lawler type pachyonychia congenita and steatocystoma multiplex.

## Recommended Dilutions

**WB** 1:2000 - 1:10000

**IF/ICC** 1:50 - 1:200

**ELISA** Recommended starting concentration is 1 µg/mL. Please optimize the concentration based on your specific assay requirements.

## Immunogen Information

### Gene ID

3872

### Swiss Prot

Q04695

### Immunogen

A synthetic peptide corresponding to a sequence within amino acids 332-432 of human Cytokeratin 17 (KRT17). (NP\_000413.1).

### Synonyms

PC; K17; PC2; 39.1; CK-17; PCHC1; Cytokeratin 17 (KRT17)

## Contact

☎ | 400-999-6126

✉ | [cn.market@abclonal.com.cn](mailto:cn.market@abclonal.com.cn)

🌐 | [www.abclonal.com.cn](http://www.abclonal.com.cn)

## Product Information

### Source

Rabbit

### Isotype

IgG

### Purification

Affinity purification

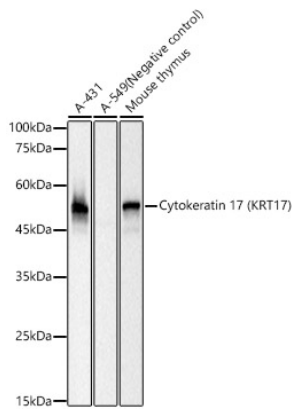
### Storage

Store at -20°C. Avoid freeze / thaw cycles.

Buffer: PBS with 0.05% proclin300,0.05% BSA,50% glycerol,pH7.3.

## Validation Data

---



Western blot analysis of various lysates, using Cytokeratin 17 (KRT17) Rabbit mAb (A23464) at 1:10000 dilution.

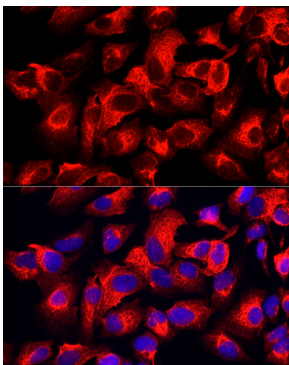
Secondary antibody: HRP-conjugated Goat anti-Rabbit IgG (H+L) (AS014) at 1:10000 dilution.

Lysates/proteins: 25µg per lane.

Blocking buffer: 3% nonfat dry milk in TBST.

Detection: ECL Basic Kit (RM00020).

Exposure time: 0.5s.



Immunofluorescence analysis of HeLa cells using Cytokeratin 17 (KRT17) Rabbit mAb (A23464) at dilution of 1:100 (40x lens). Secondary antibody: Cy3-conjugated Goat anti-Rabbit IgG (H+L) (AS007) at 1:500 dilution. Blue: DAPI for nuclear staining.