

# TFAM Rabbit mAb

Catalog No.: A23467 **Recombinant** **1 Publications**

## Basic Information

### Observed MW

24 kDa

### Calculated MW

29 kDa

### Category

Primary antibody

### Applications

WB, IHC-P, IF/ICC, IP, ELISA, ChIP

### Cross-Reactivity

Human

### CloneNo number

ARC0770

## Background

This gene encodes a key mitochondrial transcription factor containing two high mobility group motifs. The encoded protein also functions in mitochondrial DNA replication and repair. Sequence polymorphisms in this gene are associated with Alzheimer's and Parkinson's diseases. There are pseudogenes for this gene on chromosomes 6, 7, and 11. Alternative splicing results in multiple transcript variants.

## Recommended Dilutions

<b>WB</b>	1:2000 - 1:8000
<b>IHC-P</b>	1:50 - 1:200
<b>IF/ICC</b>	1:50 - 1:200
<b>IP</b>	0.5µg-4µg antibody for 200µg-400µg extracts of whole cells
<b>ELISA</b>	Recommended starting concentration is 1 µg/mL. Please optimize the concentration based on your specific assay requirements.
<b>ChIP</b>	5µg antibody for 10µg-15µg of Chromatin

## Immunogen Information

### Gene ID

7019

### Swiss Prot

Q00059

### Immunogen

Recombinant protein (or fragment). This information is considered to be commercially sensitive.

### Synonyms

TCF6; MTTF1; MTTFA; TCF6L1; TCF6L2; TCF6L3; MTDP515; TFAM

## Product Information

### Source

Rabbit

### Isotype

IgG

### Purification

Affinity purification

### Storage

Store at -20°C. Avoid freeze / thaw cycles.

Buffer: PBS with 0.09% Sodium azide, 0.05% BSA, 50% glycerol, pH7.3.

## Contact

---

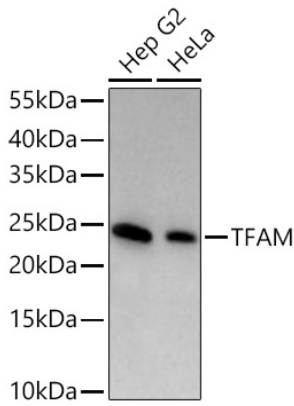
 | 400-999-6126

 | [cn.market@abclonal.com.cn](mailto:cn.market@abclonal.com.cn)

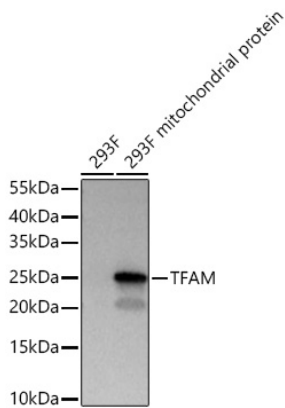
 | [www.abclonal.com.cn](http://www.abclonal.com.cn)

---

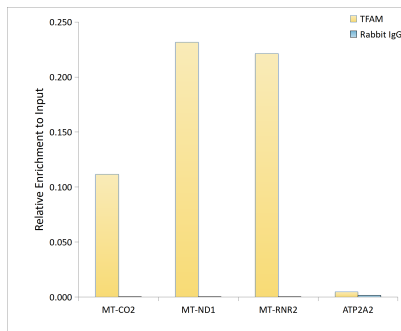
## Validation Data



Western blot analysis of various lysates using TFAM Rabbit mAb (A23467) at 1:4000 dilution incubated overnight at 4°C.  
Secondary antibody: HRP-conjugated Goat anti-Rabbit IgG (H+L) (AS014) at 1:10000 dilution.  
Lysates/proteins: 25 µg per lane.  
Blocking buffer: 3% nonfat dry milk in TBST.  
Detection: ECL Basic Kit (RM00020).  
Exposure time: 30 s.

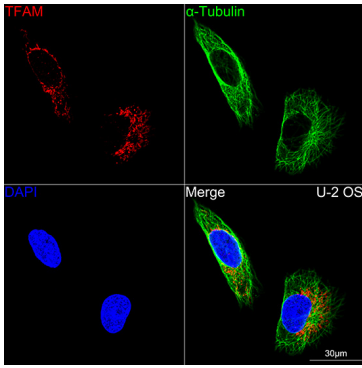


Western blot analysis of lysates from 293F cells using TFAM Rabbit mAb (A23467) at 1:4000 dilution incubated overnight at 4°C. Mitochondrial extracts derived from 293F cells.  
Secondary antibody: HRP-conjugated Goat anti-Rabbit IgG (H+L) (AS014) at 1:10000 dilution.  
Lysates/proteins: 25 µg per lane.  
Blocking buffer: 3% nonfat dry milk in TBST.  
Detection: ECL Basic Kit (RM00020).  
Exposure time: 1 s.

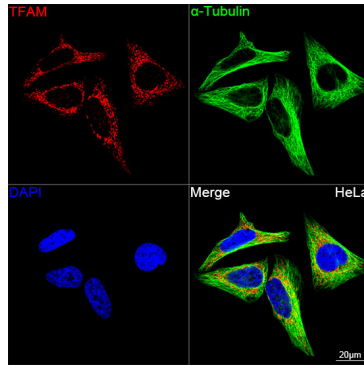


Chromatin immunoprecipitation analysis of extracts of K-562 cells, using TFAM Rabbit mAb (A23467) and rabbit IgG. The amount of immunoprecipitated DNA was checked by quantitative PCR. Histogram was constructed by the ratios of the immunoprecipitated DNA to the input.

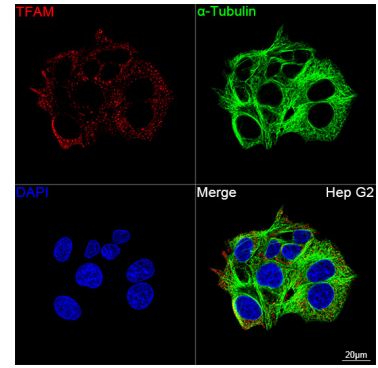
## Validation Data



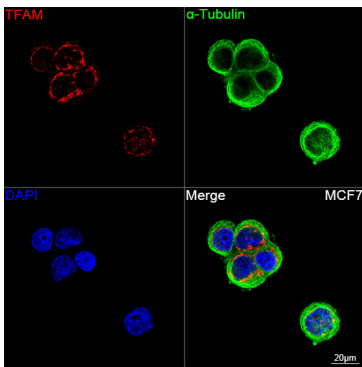
Confocal imaging of U-2 OS cells using TFAM Rabbit mAb (A23467, dilution 1:200) followed by a further incubation with Cy3 Goat Anti-Rabbit IgG (H+L) (AS007, dilution 1:500) (Red). The cells were counterstained with  $\alpha$ -Tubulin Mouse mAb (AC012, dilution 1:400) followed by incubation with ABflo® 488-conjugated Goat Anti-Mouse IgG (H+L) Ab (AS076, dilution 1:500) (Green). DAPI was used for nuclear staining (Blue). Objective: 100x.



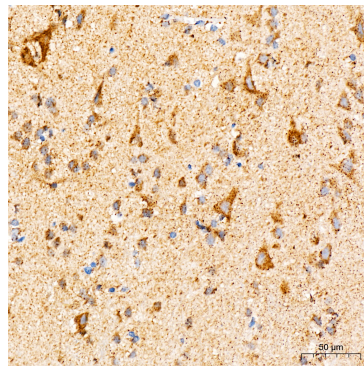
Confocal imaging of HeLa cells using TFAM Rabbit mAb (A23467, dilution 1:200) followed by a further incubation with Cy3 Goat Anti-Rabbit IgG (H+L) (AS007, dilution 1:500) (Red). The cells were counterstained with  $\alpha$ -Tubulin Mouse mAb (AC012, dilution 1:400) followed by incubation with ABflo® 488-conjugated Goat Anti-Mouse IgG (H+L) Ab (AS076, dilution 1:500) (Green). DAPI was used for nuclear staining (Blue). Objective: 100x.



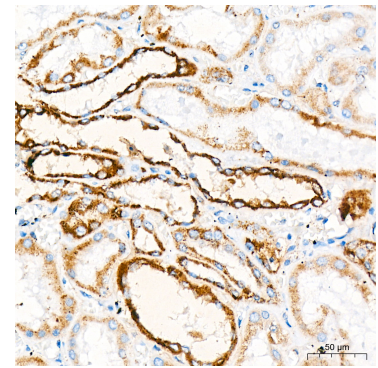
Confocal imaging of Hep G2 cells using TFAM Rabbit mAb (A23467, dilution 1:200) followed by a further incubation with Cy3 Goat Anti-Rabbit IgG (H+L) (AS007, dilution 1:500) (Red). The cells were counterstained with  $\alpha$ -Tubulin Mouse mAb (AC012, dilution 1:400) followed by incubation with ABflo® 488-conjugated Goat Anti-Mouse IgG (H+L) Ab (AS076, dilution 1:500) (Green). DAPI was used for nuclear staining (Blue). Objective: 100x.



Confocal imaging of MCF7 cells using TFAM Rabbit mAb (A23467, dilution 1:200) followed by a further incubation with Cy3 Goat Anti-Rabbit IgG (H+L) (AS007, dilution 1:500) (Red). The cells were counterstained with  $\alpha$ -Tubulin Mouse mAb (AC012, dilution 1:400) followed by incubation with ABflo® 488-conjugated Goat Anti-Mouse IgG (H+L) Ab (AS076, dilution 1:500) (Green). DAPI was used for nuclear staining (Blue). Objective: 100x.



Immunohistochemistry analysis of paraffin-embedded Human brain tissue using TFAM Rabbit mAb (A23467) at a dilution of 1:200 (40x lens). High pressure antigen retrieval was performed with 0.01 M citrate buffer (pH 6.0) prior to IHC staining.



Immunohistochemistry analysis of paraffin-embedded Human kidney tissue using TFAM Rabbit mAb (A23467) at a dilution of 1:200 (40x lens). High pressure antigen retrieval was performed with 0.01 M citrate buffer (pH 6.0) prior to IHC staining.