

# [KD Validated] eIF4EBP1 Rabbit mAb

Catalog No.: A23500 **Recombinant**

## Basic Information

### Observed MW

20kDa

### Calculated MW

13kDa

### Category

Primary antibody

### Applications

ELISA, WB, IF/ICC

### Cross-Reactivity

Human, Rat

### CloneNo number

ARC56864

## Background

This gene encodes one member of a family of translation repressor proteins. The protein directly interacts with eukaryotic translation initiation factor 4E (eIF4E), which is a limiting component of the multisubunit complex that recruits 40S ribosomal subunits to the 5' end of mRNAs. Interaction of this protein with eIF4E inhibits complex assembly and represses translation. This protein is phosphorylated in response to various signals including UV irradiation and insulin signaling, resulting in its dissociation from eIF4E and activation of mRNA translation.

## Recommended Dilutions

<b>WB</b>	1:1000 - 1:5000
<b>IF/ICC</b>	1:50 - 1:200

## Immunogen Information

### Gene ID

1978

### Swiss Prot

Q13541

### Immunogen

A synthetic peptide corresponding to a sequence within amino acids 1-100 of human eIF4EBP1 (NP\_004086.1).

### Synonyms

BP-1; 4EBP1; 4E-BP1; PHAS-I; [KD Validated] eIF4EBP1

## Contact

☎ | 400-999-6126

✉ | [cn.market@abclonal.com.cn](mailto:cn.market@abclonal.com.cn)

🌐 | [www.abclonal.com.cn](http://www.abclonal.com.cn)

## Product Information

### Source

Rabbit

### Isotype

IgG

### Purification

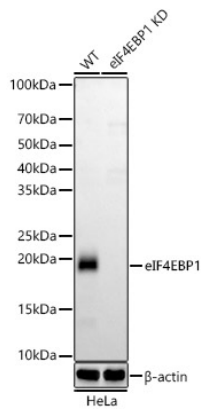
Affinity purification

### Storage

Store at -20°C. Avoid freeze / thaw cycles.

Buffer: PBS with 0.05% proclin300, 0.05% BSA, 50% glycerol, pH7.3.

## Validation Data



Western blot analysis of lysates from wild type(WT) and eIF4EBP1 knockdown (KD) HeLa cells, using [KD Validated] eIF4EBP1 Rabbit mAb (A23500) at 1:2000 dilution.

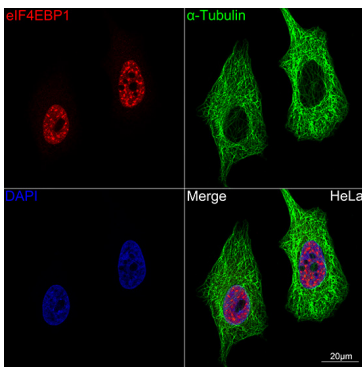
Secondary antibody: HRP Goat Anti-Rabbit IgG (H+L) (AS014) at 1:10000 dilution.

Lysates/proteins: 25µg per lane.

Blocking buffer: 3% nonfat dry milk in TBST.

Detection: ECL Basic Kit (RM00020).

Exposure time: 180s.



Confocal imaging of HeLa cells using [KD Validated] eIF4EBP1 Rabbit mAb (A23500,dilution 1:100)(Red). The cells were counterstained with  $\alpha$ -Tubulin Mouse mAb (AC012,dilution 1:400) (Green). DAPI was used for nuclear staining (blue). Objective: 100x.